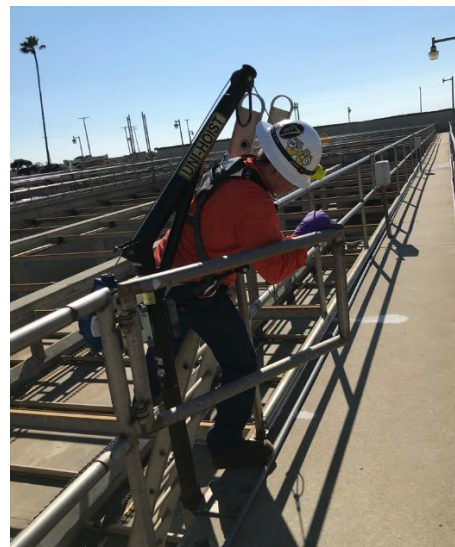
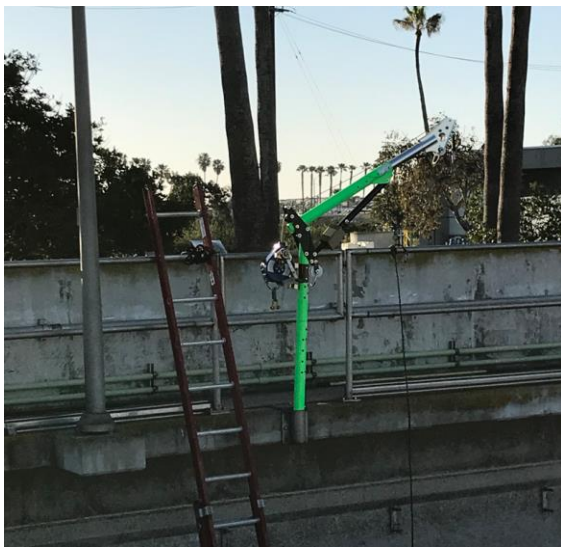


**LEGISTAR NO. 2023-2772  
SUPPLEMENTAL ATTACHMENT  
ACTIVATED SLUDGE CLARIFIER ENTRY IMPROVEMENTS AT PLANT NO. 2, PROJECT  
NO. FR2-0023**

**Secondary Clarifier Safety Improvements**

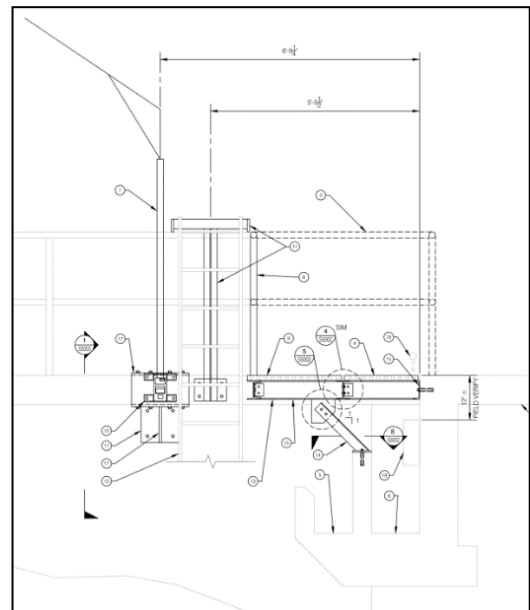
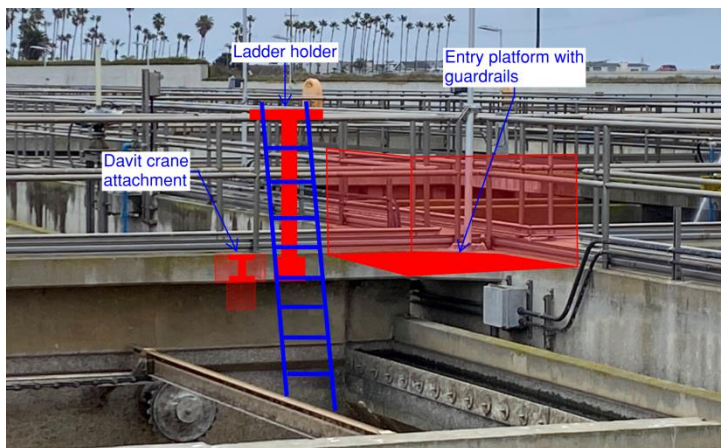
**Figure 1 – Existing Problem:**

Difficult ingress/egress at the secondary clarifiers due to inconvenient placement of ladder and davit crane.



**Figure 2 – Solution:**

New entry platform layout with improved placement for ladder access.



## DAFT Facility Safety Improvements

### Figure 3 – Existing Problem:

Existing platform over the DAFT basin (similar layout in all four DAFTs) without fall protection.



### Figure 4 – Solution:

New fall restraint beam over platform and walkway modification for safer platform access.

