

Lido Pump Station Sewage Spill

Presented By:
Riaz Moinuddin
Director of O&M

Operations
Committee

December 7, 2022



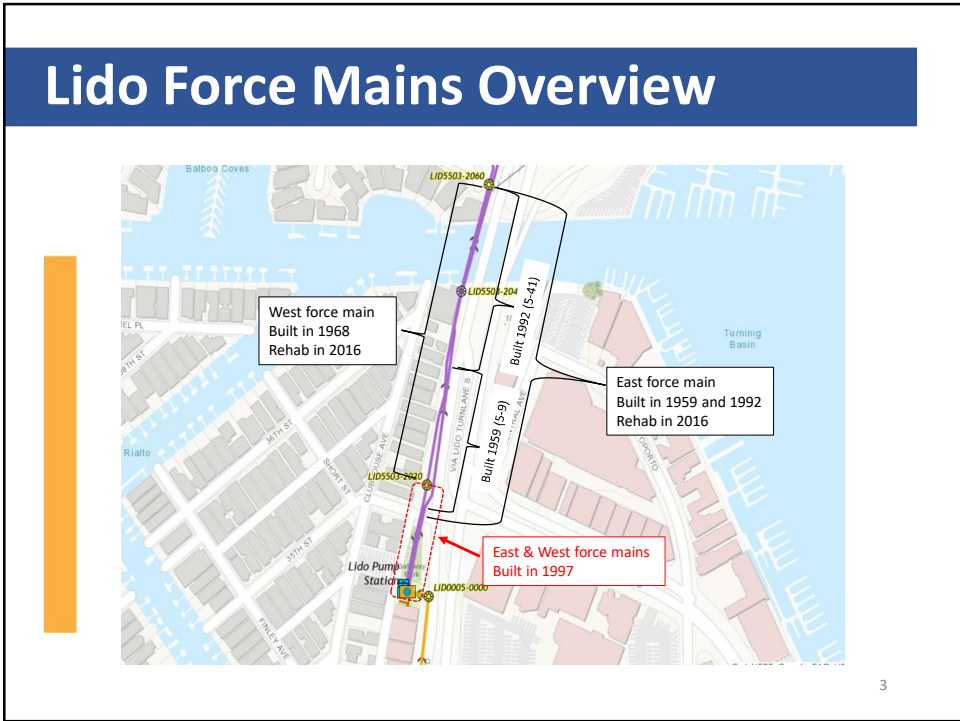
1

Lido Pump Station Overview



2


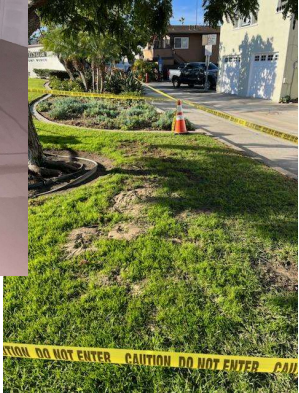
2



3

East Force Main Leak Timeline

- West force main was in operation
- Wednesday (11/2/22) - Switched from West to East force main
- Friday (11/4/22) - Leak reported, standby crew responded and approx. 10,000 gallons spilled
 - Standby crew switched back to West force main, leak stopped
- Currently operating with West force main

4

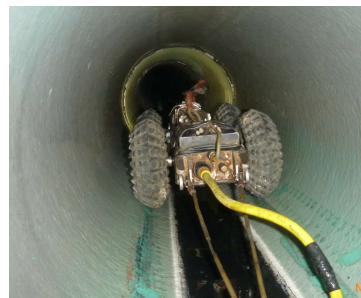
Lido Force Main CCTV Inspection

Piping below the force main was removed to provide access for CCTV on 11/16/2022



5

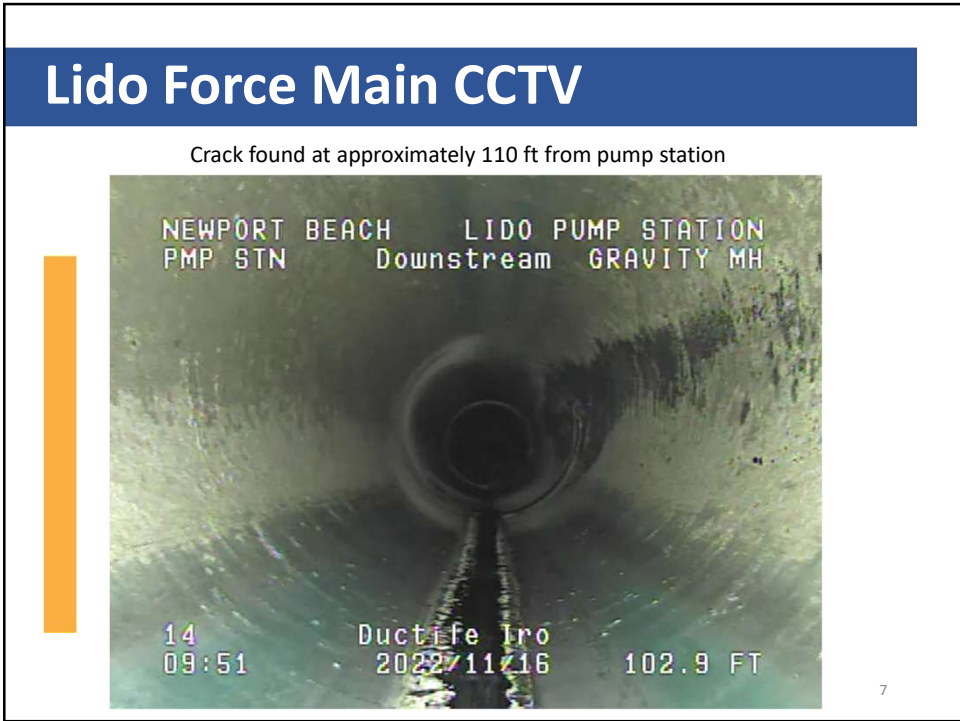
Lido Force Main CCTV



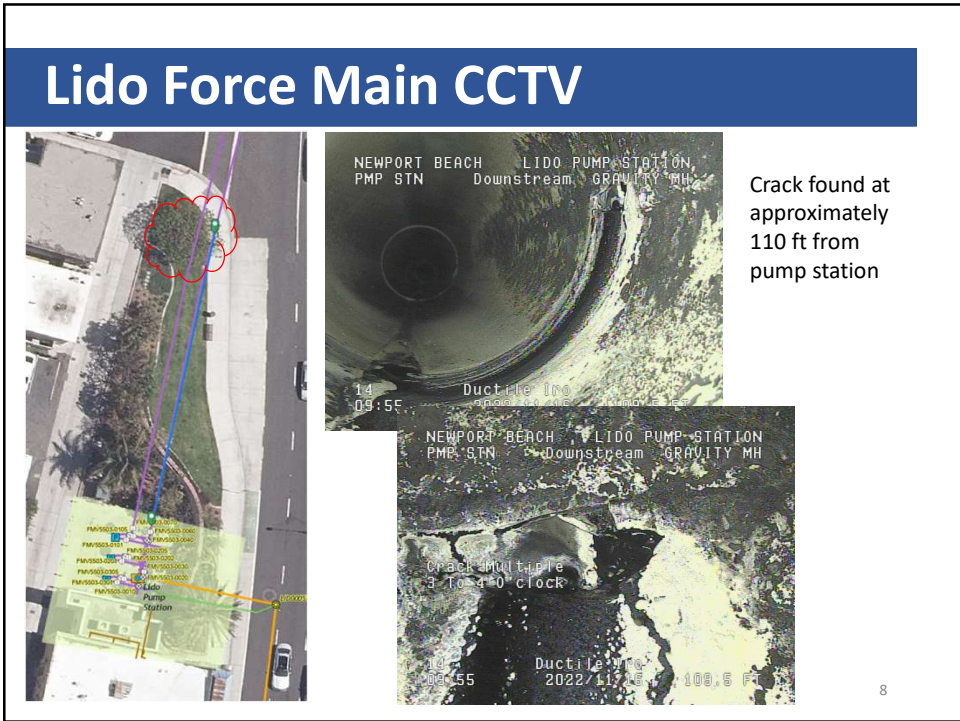
- Initial CCTV was performed on 11/16/22 to locate break
- Approximately 142 feet of East force main was inspected
- Inspection stops at a junction joint
- Additional 416 feet of CCTV was performed from where pipe was excavated and removed



6



7



8

Excavation and Repairs

- Opened a project to repair the pipe
- Setup Traffic Control
- Excavate to further assess the external pipe condition



9

9

Excavation and Repairs



10

10

Excavation and Repairs



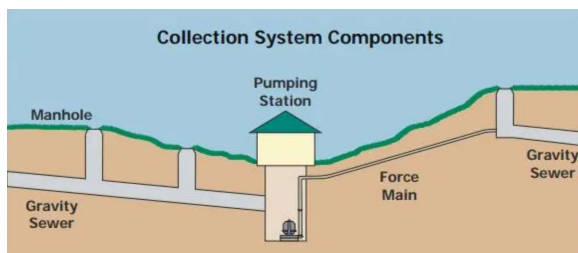
- Damaged pipe was cutout and replaced
- Couplings were concrete encased, pipe exterior wax-taped
- Force main was pressure tested
- Excavation site being restored

11

Asset Management - Force Main Condition

Current force main remaining useful life scores are theoretical and adjusted per condition assessment(s)

Asset Type	15th Street	A Street	Bay Bridge	Bitter Point	College	Crystal Cove	Edinger	Lido	MacArthur	Main Street	Rocky Point	Slater	Seal Beach	Westside	Yorba Linda	Newport (System)
Force Mains	3	3	4	2	3	3	5	5	5	5	1	4	3	3	3	1



5	• RUL: < 5 years
4	• RUL: 5 – 10 years
3	• RUL: 11 – 15 years
2	• RUL: 16 – 20 years
1	• RUL: > 20 years

RUL = Remaining Useful Life

12

12

Asset Management - Force Main Reliability

Key Issue:

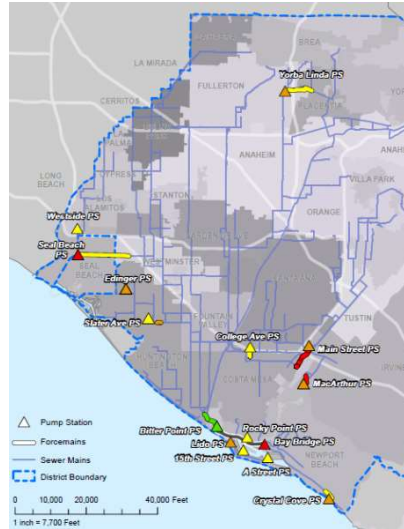
Force mains are often difficult to inspect & have a high consequence of failure (COF)

Asset Management Actions:

- Develop plan to inspect all force mains
- Prioritize inspections (Risk & COF)
- Evaluate frequency of inspection

Path Forward:

- Use existing Condition Assessment Contracts and internal resources
- Planning Study for locations that require additional support



13

13

Questions



14