

Seal Beach Pump Station Replacement Project No. 3-67

Presented by:
Kathleen Millea
Director of
Engineering

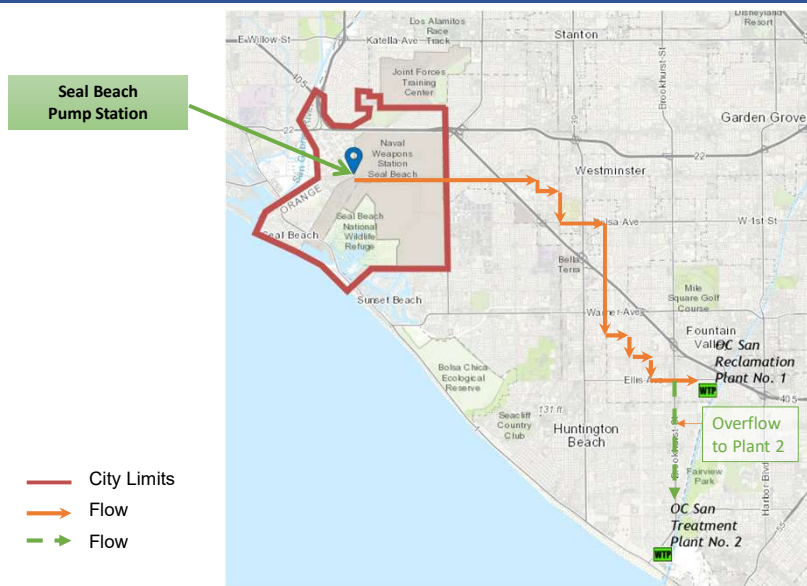
Operations
Committee

November 2, 2022



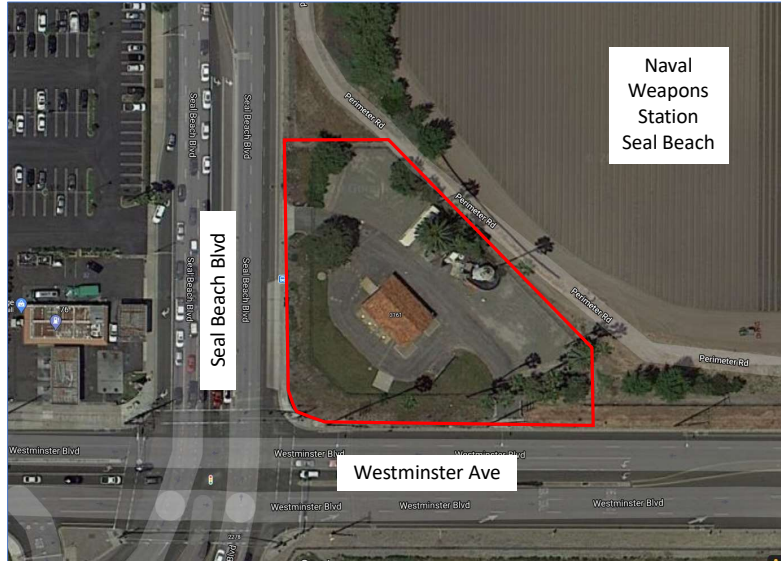
1

Project Location: City of Seal Beach



2

Project Location: City of Seal Beach



3

Existing Pump Station



4

Reason for Project

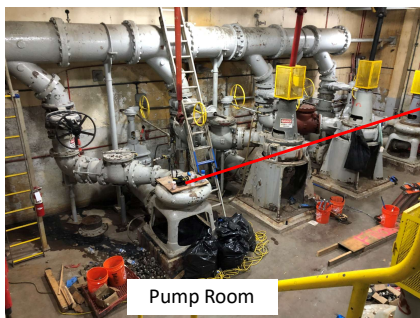
- Constructed in 1970
- Severe corrosion
- Near the end of its useful life
- Poor hydraulic performance
- No upstream odor control
- Does not meet current electrical code



5

5

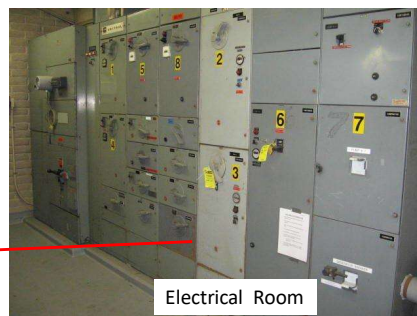
Reason for Project



Pump Room

Urgent Pump
Replacement

Corroded/Outdated
Electrical Cabinets



Electrical Room

6

6

Reason for Project

Coating failure,
corroded concrete
wet well wall

Bearing failure,
sewage leak

Corroded pump
support

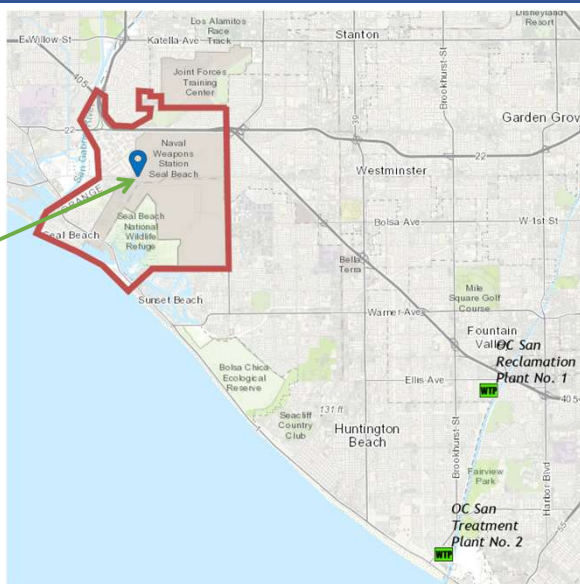


7

7

Additional Design Considerations

Seal Beach
Pump Station



City Limits

8

8

Westside Pump Station

The map shows the Westside Pump Station area in Orange County, California. A red outline indicates the city limits. Key locations include the Joint Forces Training Center, Naval Weapons Station Seal Beach, Seal Beach National Wildlife Refuge, and Seal Beach. Callouts point to the Westside Pump Station (orange) and Seal Beach Pump Station (green). A photograph below shows the Westside Pump Station building, a modern structure with palm trees in the foreground.

Westside Pump Station

Seal Beach Pump Station

City Limits

Westside Pump Station

9

9

Additional Design Considerations

The diagram illustrates the existing condition of the pump stations. It shows a cross-section of the Westside Pump Station on the left and the Seal Beach Pump Station on the right, connected by a pipe. The Westside Pump Station is shown as a rectangular structure with a flat roof, and the Seal Beach Pump Station is shown as a similar structure with a gabled roof. The diagram is labeled "Existing Condition".

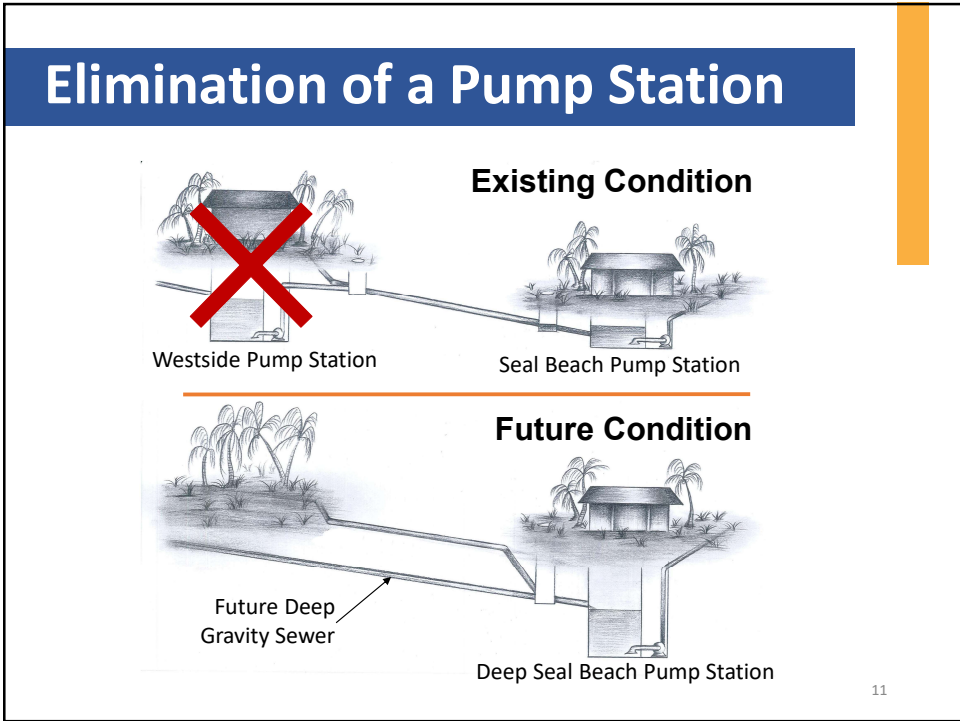
Existing Condition

Westside Pump Station

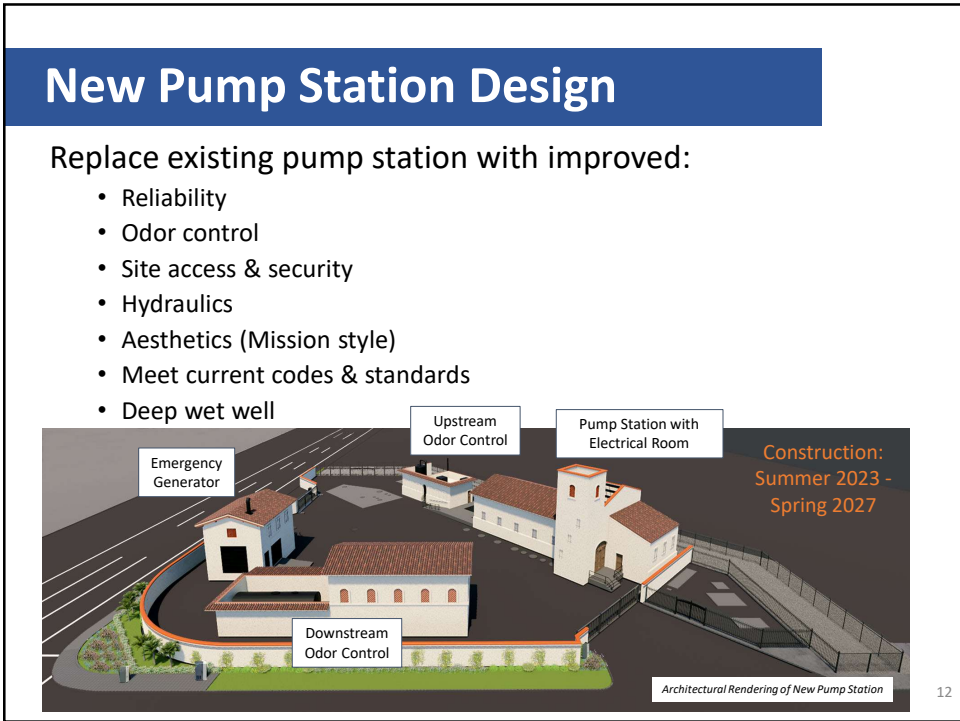
Seal Beach Pump Station

10

10



11



12

New Pump Station Layout



13

13

Mission Style Aesthetic



14

14

Architectural Renderings



View from Crossing



View from Westminster Ave



View from Seal Beach Blvd



View from Westminster Ave

15

15

Budget Request

\$16.2M Additional Budget Needed

Construction ~\$16M

Design ~\$155K

(\$3.2M) Available Contingency

\$13.0 M Budget Request

16

16

Recommendation

Recommend to the Board of Directors to:

- A. Approve a project budget increase of \$13,000,000 for Seal Beach Pump Station Replacement, Project No. 3-67, for a new total project budget of \$100,000,000; and
- B. Approve a contingency increase of \$155,183 (2.6%) to the existing Professional Design Services Agreement with Lee & Ro, Inc. for Seal Beach Pump Station Replacement, Project No. 3-67, for a new total contingency amount of \$749,968 (12.6%).

17

17

Questions



18