

# Primary Sedimentation Basins No. 3-5 Replacement at Plant No. 1 Project No. P1-126

Presented by:  
Don Cutler  
Engineering  
Supervisor

Operations  
Committee  
April 6, 2022

Consultant Award



1

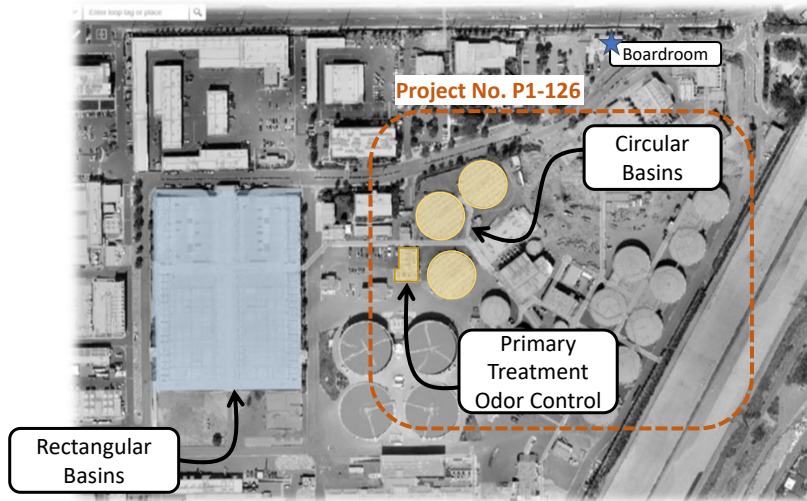
## What is Primary Sedimentation?



2

2

## Project Overview

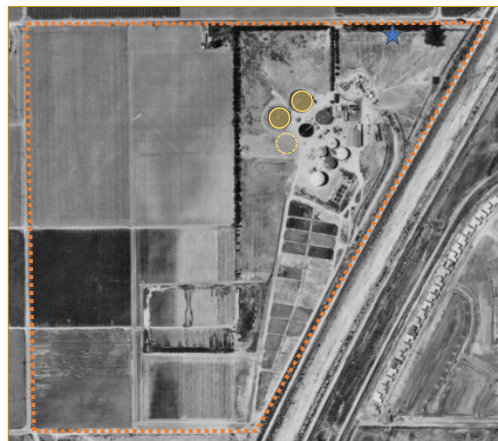


3

3

## What is the Problem?

- Circular basins are in very poor condition
- 60+ years old



4&lt;93

4

4

## What is the Problem?



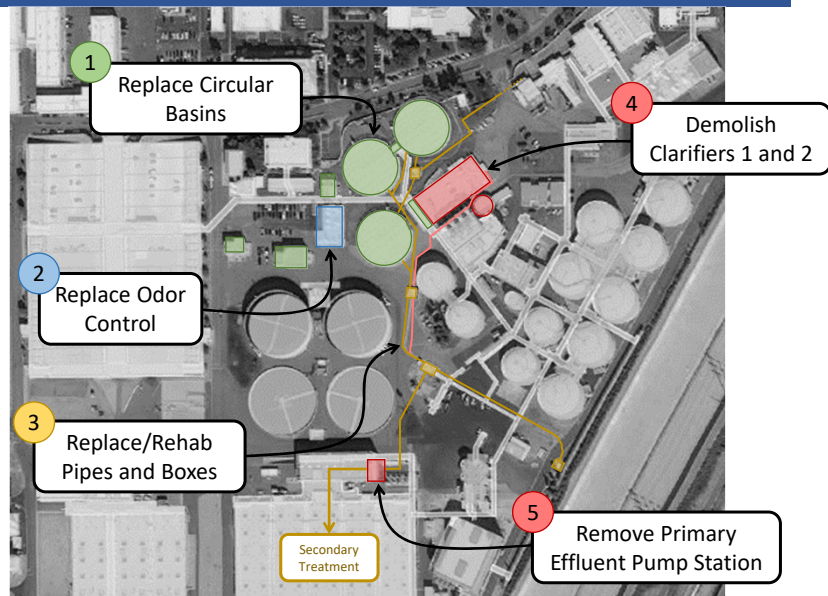
Subdu/Endvz/7



5

5

## Proposed Solution

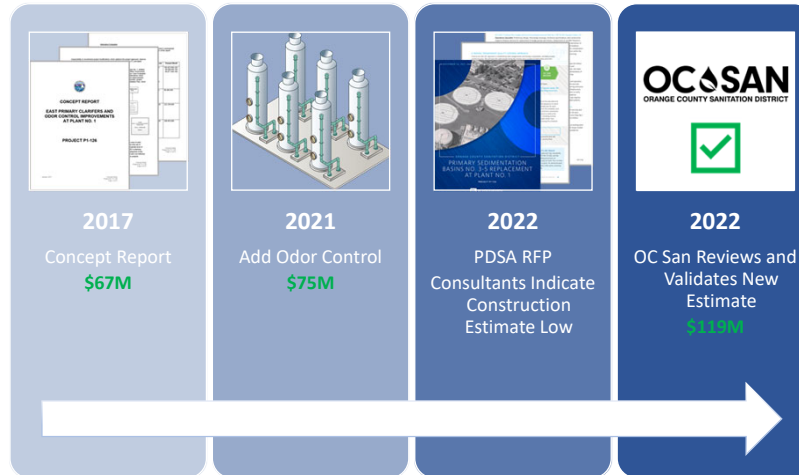


6

6

## Construction Cost Increase

- Construction estimate increased
  - \$75M (Original) → \$119M (Updated)



7

7

## Proposed Budget

Current Budget	\$127 Million
Proposed Budget*	\$183 Million
Construction	\$119 Million
Non-construction cost	\$ 64 Million

\* To be requested as part of the FY 22-23 and 23-24 Budget

8

8

## Selection Process

- Three proposals received
- Interviews conducted with top two firms
- Black & Veatch selected



9

9

## Negotiations

	Original Proposal	Negotiated
<b>Total Hours</b>	69,996	70,451
<b>Total Fee</b>	\$15,404,103	\$14,163,000

- Project management hours adjusted to allocate less to senior level staff
- Meeting and workshop assumptions coordinated to reduce overall effort
- Various minor additions to scope

10

10

## Recommendation

Recommend to the Board of Directors to:

- A. Approve a Professional Design Services Agreement with Black & Veatch to provide engineering services for Primary Sedimentation Basins No. 3-5 Replacement at Plant No. 1, Project No. P1-126, for an amount not to exceed \$14,163,000; and
- B. Approve a contingency of \$1,416,300 (10%).

11

11

## Questions



12

12