

# Utility Water Planning Study at Plant Nos. 1 and 2, Project No. PS23-05

Presented by:  
Justin Fenton, Engineering Manager

Professional Services Agreement

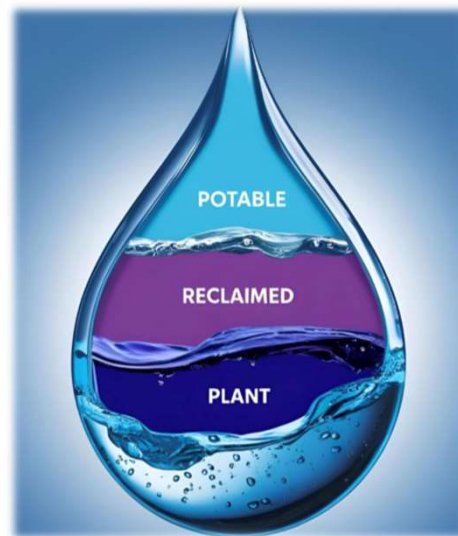
Operations Committee  
April 2, 2025



1

## Reclamation Plant Water Sources

- **Potable/Industrial - \$\$\$**
  - Faucets, showers, sensitive chemicals
- **Reclaimed - \$\$**
  - Plant water backup, some seal water
- **Plant - \$**
  - Cooling water, washdown, majority of seal water



2

2

## Plant No. 1 – Plant Water Pump Station

- Built in 1989
- Source: Secondary effluent



3

3

## Plant No. 1 – City Water Pump Station

- Built in 1992
- Source: City of Fountain Valley



4

4

## Plant No. 2 – City Water Pump Station

- Built in 1995
- Source: City of Huntington Beach

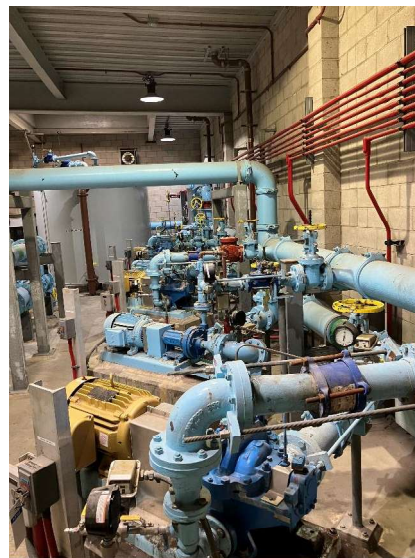


5

5

## Current Issues

- City (Potable) Water Pump Stations lack redundancy
- Plant Water Pump Station access is limited
- Pump reliability
- Pump sizing
- Leaking valves
- General asset condition



6

6

## Study Recommendations

- Identify scope elements for future CIP Projects, including whether to rehabilitate or replace the three (3) pump stations
- Increase redundancy of Potable Water Pump Stations
- Increase Plant Water pumping capacity



7

7

## Selection Process and Negotiations

- Three (3) proposals received
- HDR Engineering Inc. selected as most qualified
- Negotiations
  - Reduced assumed level of effort
  - Streamlined project management

	Original Proposal	Negotiated
<b>Total Hours</b>	2,949	2,559
<b>Total Fee</b>	\$782,254	\$670,000

8

8

## Recommendation

Recommend to the Board of Directors to:

- A. Approve a Professional Services Agreement with HDR Engineering, Inc., to provide engineering services for Utility Water Planning Study at Plant Nos. 1 and 2, Project No. PS23-05, for an amount not to exceed \$670,000; and
- B. Approve a contingency of \$67,000 (10%).

9

9

# Questions?

10

10