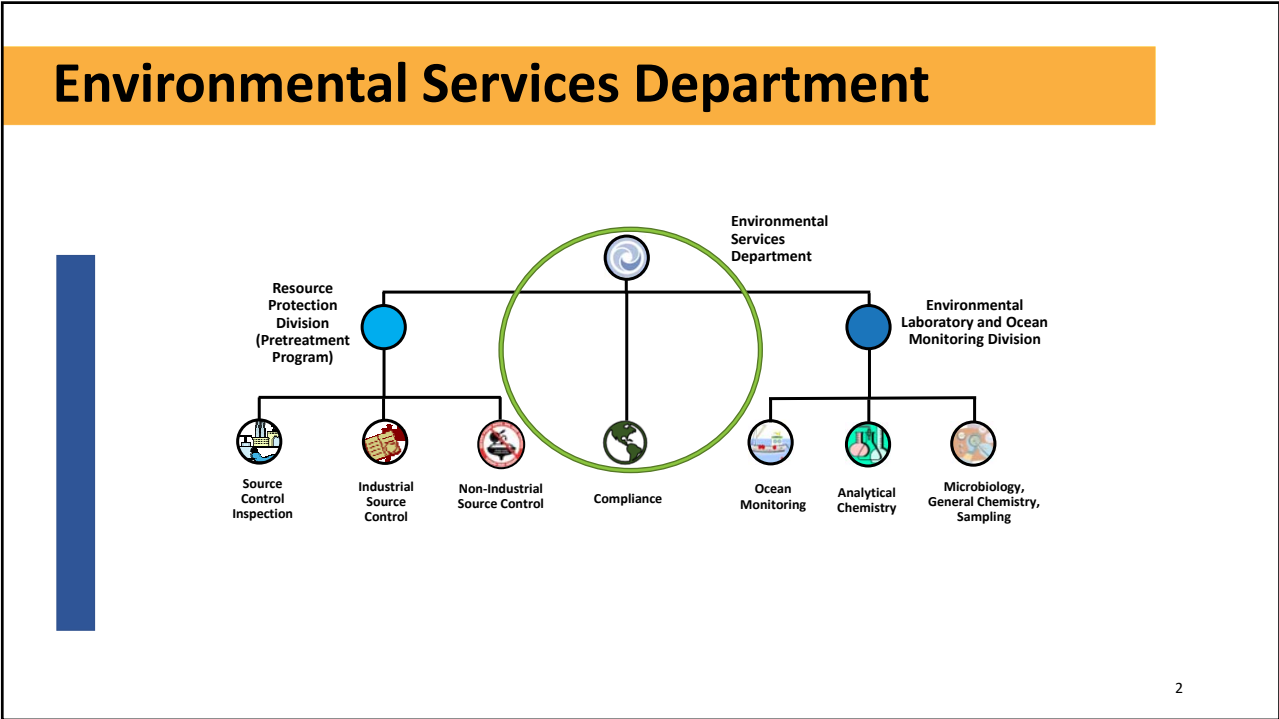
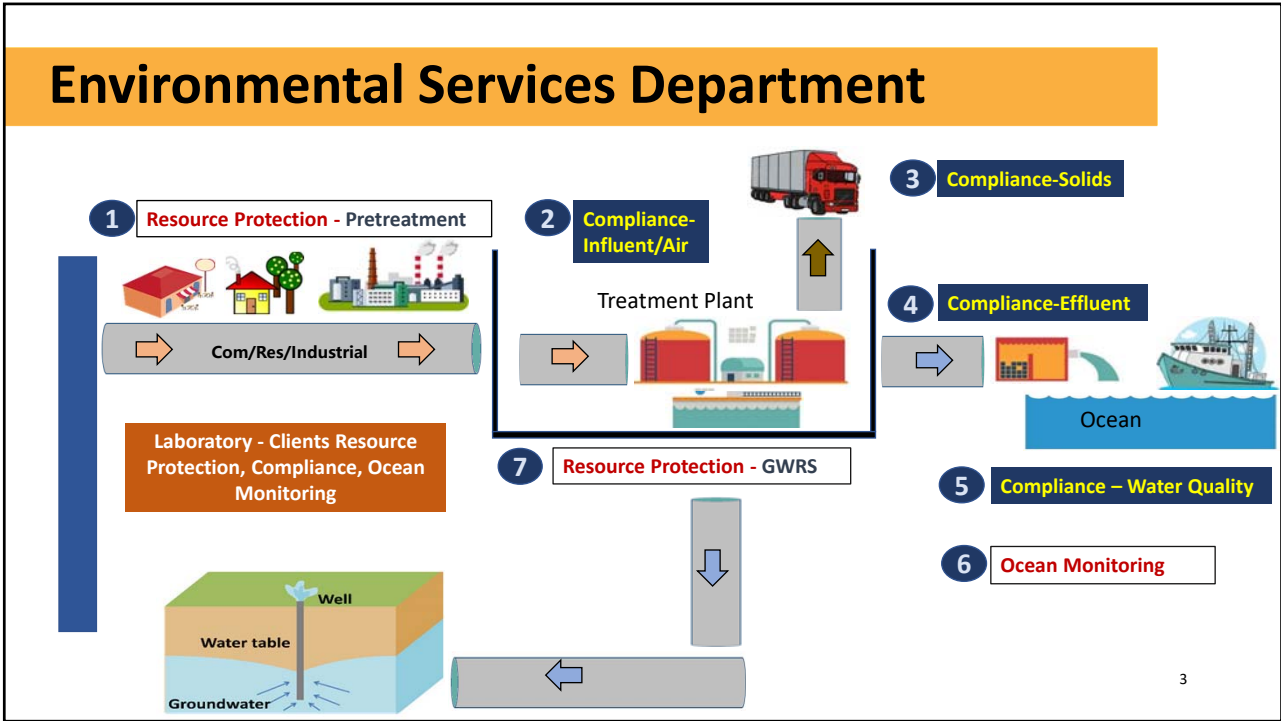




1



2

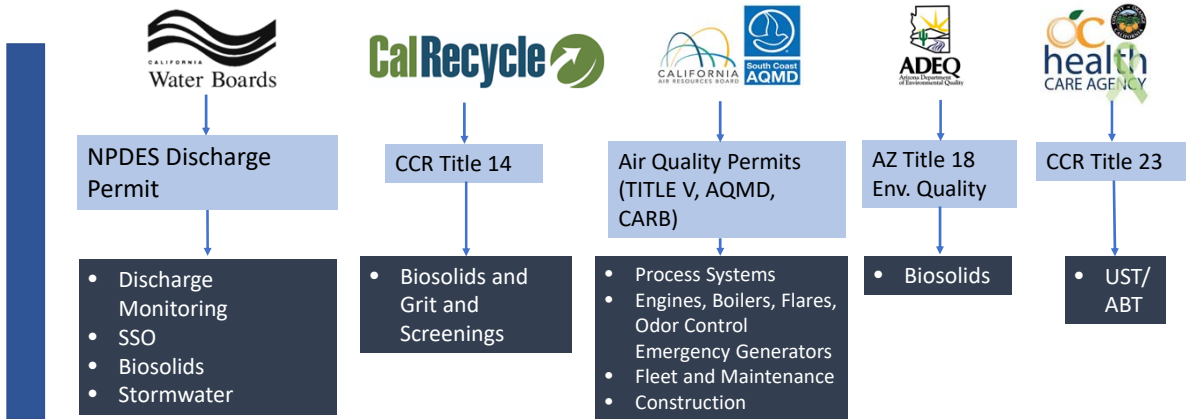


3

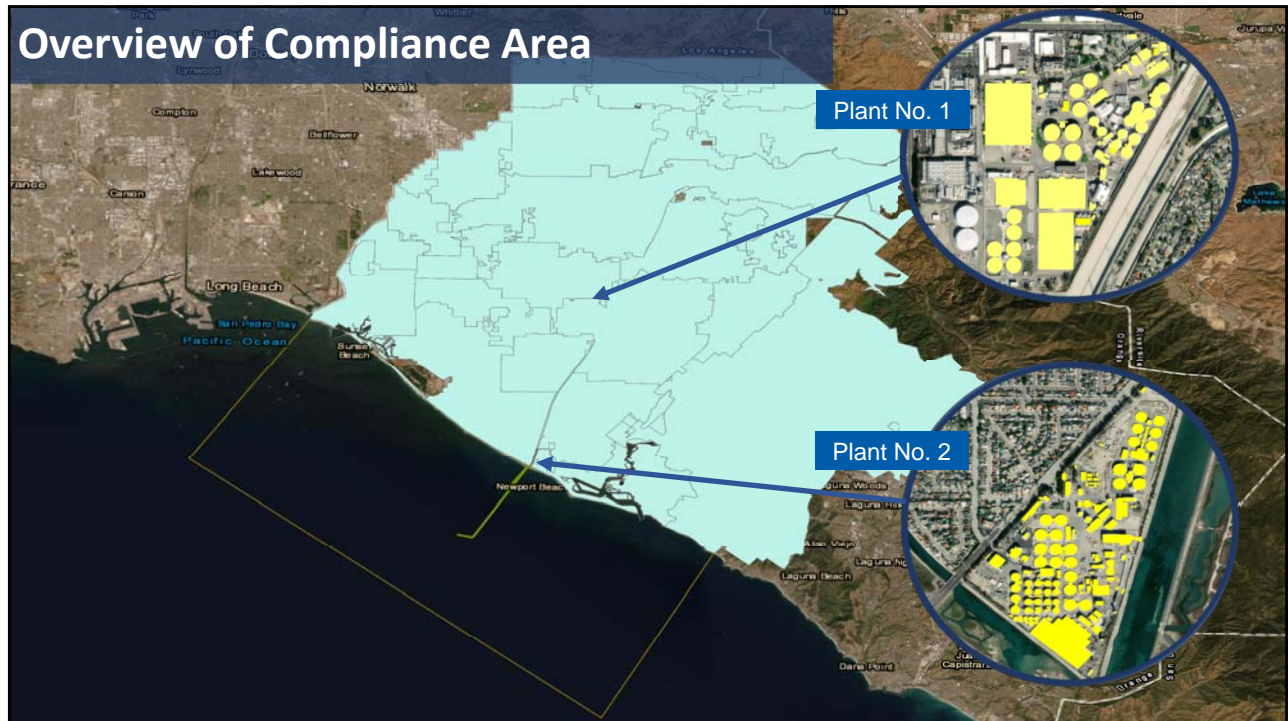


4

Environmental Compliance and Reporting Governance



5



6

Overview of Compliance Area



7

7

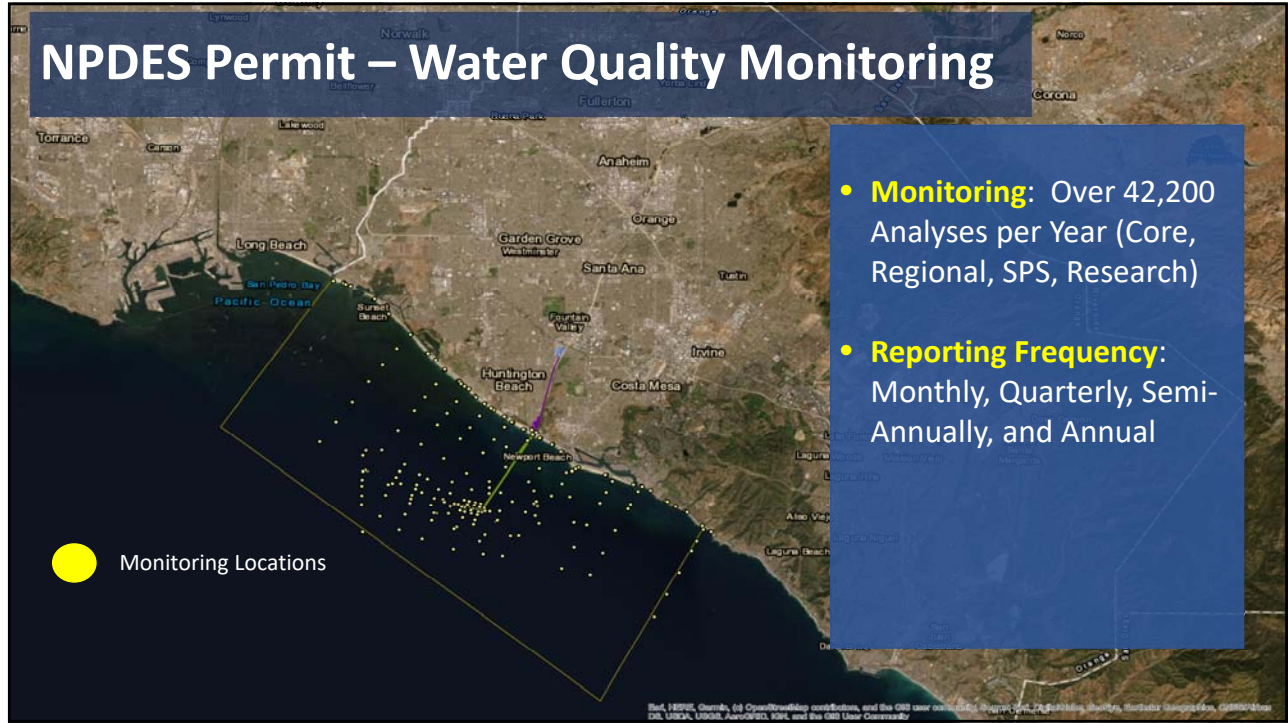
NPDES Permit – Discharge Monitoring Reporting

- **Monitoring:** Over 12,500 Analyses per Year
- **Reporting Frequency:** Monthly, Quarterly, Semi-Annually, and Annual
- **Inspections:** EPA, Regional Water Quality Control Board
- **Internal Audits:** Annual

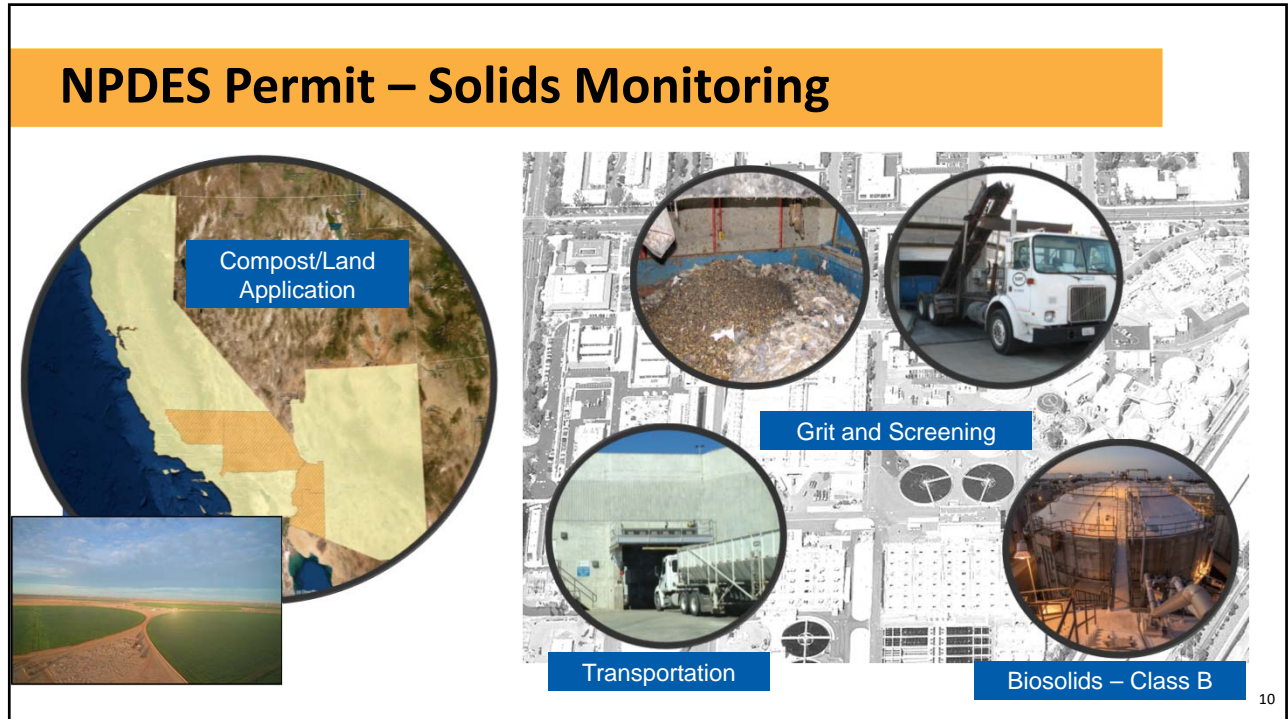


8

8



9



10

Air Quality – Compliance Reporting and Monitoring

Inspections: Annual

Reporting: Quarterly, Semi-Annual, Annual, Incident Reporting

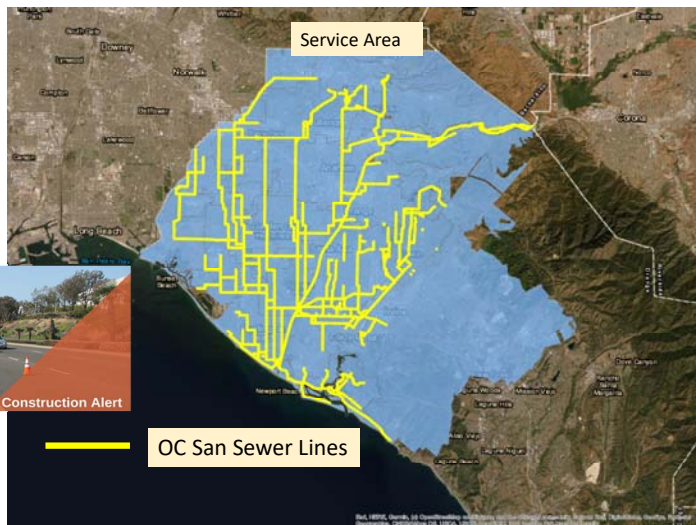
Internal Audit: Annual

>70,000 Data Points/Year/Engine  Engines	>1,000 Data Points/Year/Scrubber  Odor Control	>8,700 Data Points/Year/Boiler  Boilers	>4,300 Data Points/Year/Flare  Flares
>8,700 Data Points/Year/Station  Pump Stations	>8,700 Data Points/Year/Generator  Generators	Monitor >200 Units  Fleet/Maintenance	Air Permitting and Monitoring  Construction

11

Sanitary Sewer Overflow Reporting and Stormwater Construction

- 388 Miles of OC San's Sewer Lines
- Stormwater Construction



12

Working Smarter

- Collaboration with Regulators
- Regulatory Advocacy
- Interactive Compliance and Regulatory Tracker Dashboards
- Internal Audit Program

Active Compliance Tasks Only

Area	Status	OK	Warning	Problem	Total
Air Quality	●	2	0	0	2
Biosolids	▲	5	1	0	6
Discharge Monitoring	●	2	0	0	2
Environmental Auditing	●	0	0	0	0
Hazardous Waste and Materials	●	2	0	0	2
Interplant Gas Line	●	0	0	0	0
Ocean Monitoring	●	6	0	0	6
Post Construction Mitigation	●	0	0	0	0
Resource Protection	●	0	0	0	0
Sanitary Sewer Overflows	●	0	0	0	0
Stormwater	●	1	0	0	1
Underground Storage Tanks	●	1	0	0	1

- Status OK
- ▲ Status Warning

13

13

Future Concerns and Collaborations

- Organic Diversion – Food Waste
- Constituents of Emerging Concern – PFAS, Microplastics, Flame Retardants, Pharmaceutical and Personal Care Products
- Harmful Algal Bloom
- AB 617 Implementation – California Air Resources Board

14

14

Noncompliance Risk and Liabilities

LOCAL NEWS - News

Hyperion plant still releasing partially treated sewage 5 miles offshore

Wastewater is 'not being treated to the level that it is normally treated because of the damage to the plant,' says a water quality board official



The Los Angeles Regional Water Quality Board is requiring Los Angeles to conduct additional offshore monitoring and to provide daily reports about ongoing discharges at the Hyperion Water Treatment Plant. Signs at Occidental State Beach across the street from the plant, advise people that contact with the water may cause illness. in Playa del Rey on Friday, July 30, 2021. (Photo by Dawn Maguire/Daily News, SCNG)

Fines: Up to \$25,000 per day

THE ORANGE COUNTY REGISTER

NEWS LOCAL NEWS

Record sewage spill hits Laguna Beach just after council approves more funding for sewer maintenance

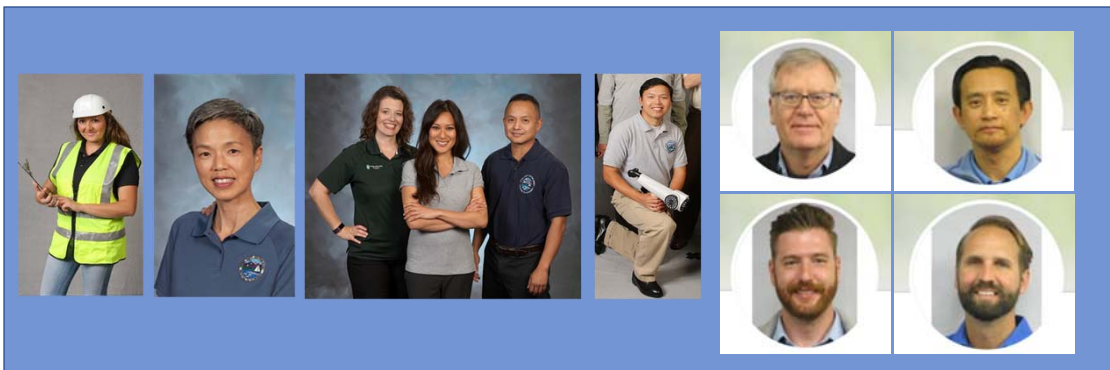


Beach goers stop to read the signs posted along the boardwalk at Boca Beach in Laguna Beach on Friday, September 24, 2018, following a nearby sewage spill of about a million gallons of raw sewage in Laguna Beach. The Orange County Healthcare Agency closed the road with the signs from Paradise Point at Boca Beach in Newport Beach to the Pacific Beach in Dana Point and San Clemente. (Photo by Mark Rightman, Orange County Register/SCNG)

15

15

Meet the Team



16

16

Questions



Contact: Tom Meregillano, Environmental Supervisor

Email: Tmeregillano@ocsan.gov

Phone: (714) 593-7457

17