

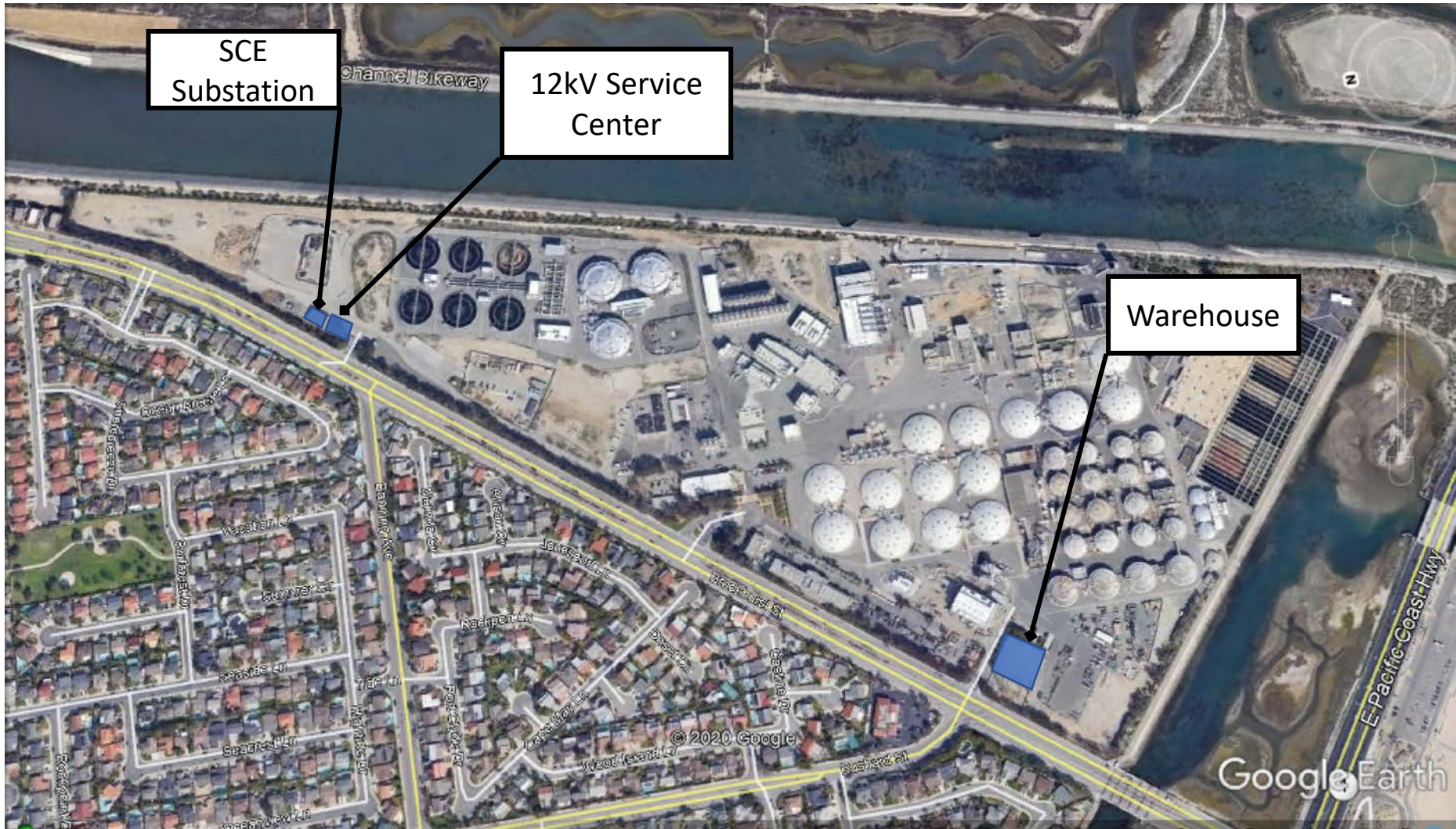
Warehouse, Electrical Substation and 12kV Service Center Replacement at Plant No. 2

Project No. P2-126

Kathy Millea, Director of Engineering
Operations Committee
November 4, 2020



Facilities to be Replaced at Plant No. 2



Existing Warehouse



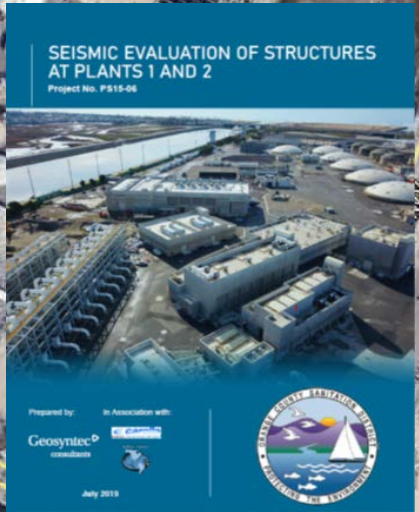
Existing Warehouse



Warehouse

Future
TPAD Digester
Facility

Existing 12kV Service Center



Existing SCE Substation



SCE
Substation



DRAFT

METHOD OF SERVICE STUDY REPORT

Orange County Sanitation District
Orcogen Substation

Month XX, 2010



This study has been completed by Southern California Edison
pursuant to the request of OCSD, Inc.

The Electrical Safety and Health Administration (ES&H) and program information of Southern California Edison (SCE) is for use by OCSD, Inc. in connection with the Method of Service Study. All other rights to materials are the property of the respective owners. © 2010, Southern California Edison.

SCE Feed Reliability
Improvements Study

Project Site





Brown & Caldwell

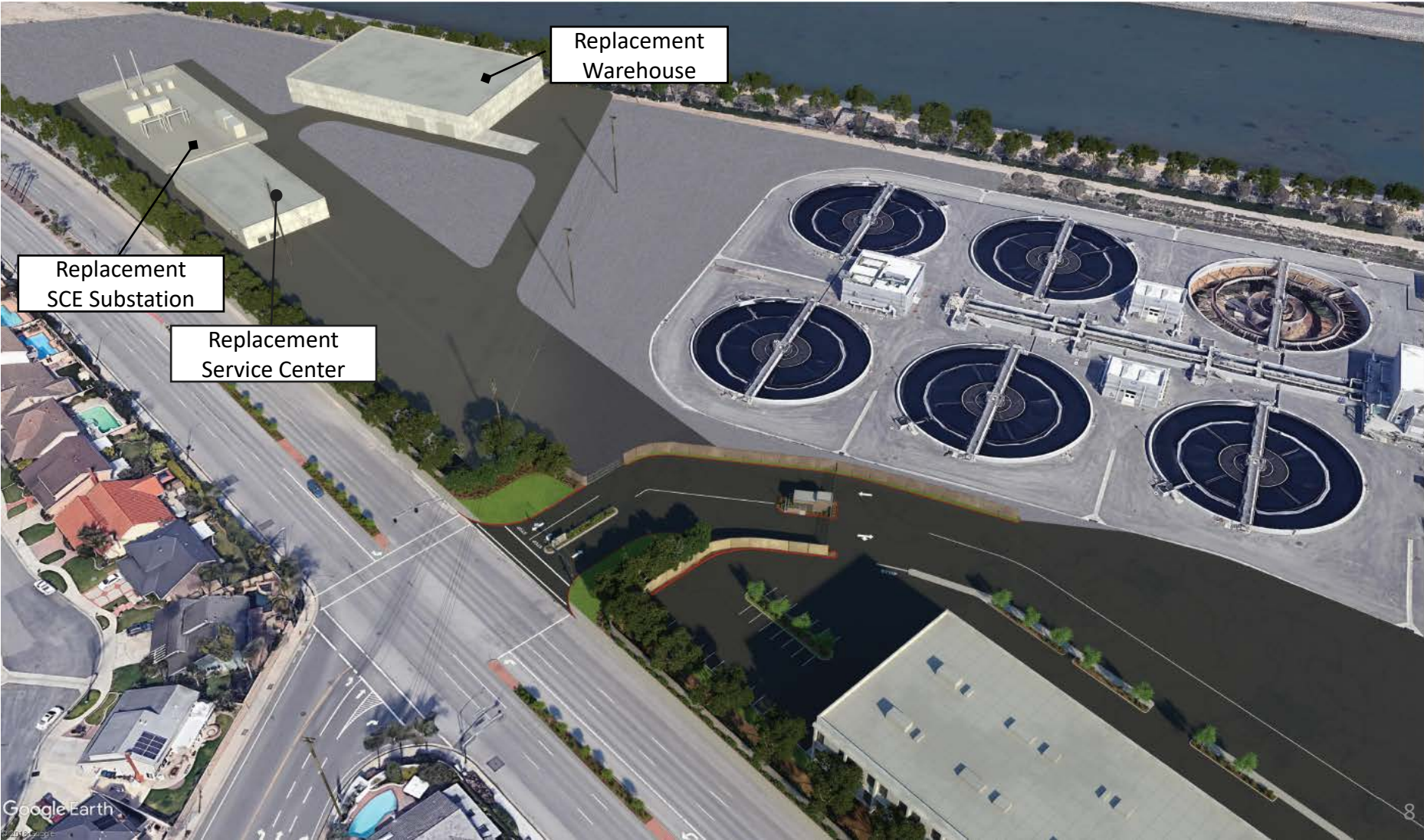
Task ORDER PROPOSAL | Prepared for
Orange County Sanitation District

**PS18-05 Plant No. 2
Future Site Plan
Development**

March 27, 2019 | PLAN2017-00 On-Call Planning Studies (Wastewater)



Future Site Layout Rendering

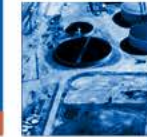


Replacement Warehouse

Replacement SCE Substation

Replacement Service Center

Construction Cost and Duration



| | Construction Cost | Start Year | Duration (in Years) |
|----------------------|-------------------|------------|---------------------|
| Warehouse | \$8.2M | 2023 | 1.5 |
| 12 kV Service Center | \$14.8M | 2024 | 3.5 |
| SCE Substation | \$19.5M* | 2024 | 3 |

* Work by SCE. Cost includes design and construction.

Selection Process



- Three proposals received
- Interviewed the top proposer
- Stantec Consulting Services selected
 - Clear understanding of the project
 - Approach to schedule risks
 - Creative approach to site layout
 - Experienced project team

Negotiations



| | Original Proposal | Negotiated |
|--------------------|--------------------------|-------------------|
| Total Hours | 28,048 | 27,399 |
| Total Fee | \$4,979,355 | \$4,876,455 |

- Five meetings held with Consultant
- Clarified project elements and design assumptions
- Ensured scope and level of effort are appropriate

Recommendation



- Approve a Professional Design Services Agreement with Stantec Consulting Services, Inc. to provide engineering services for Warehouse, Electrical Substation and 12kV Service Center Replacement at Plant No. 2, Project No. P2-126, for an amount not to exceed \$4,876,455; and
- Approve a contingency of \$487,646 (10%).

