

Headquarters Complex at Plant No. 1

Project No. P1-128A

Presented by:
Mike Dorman
Director of
Engineering

Administration
Committee
September 13, 2023

Quarterly Update



1

Project Site

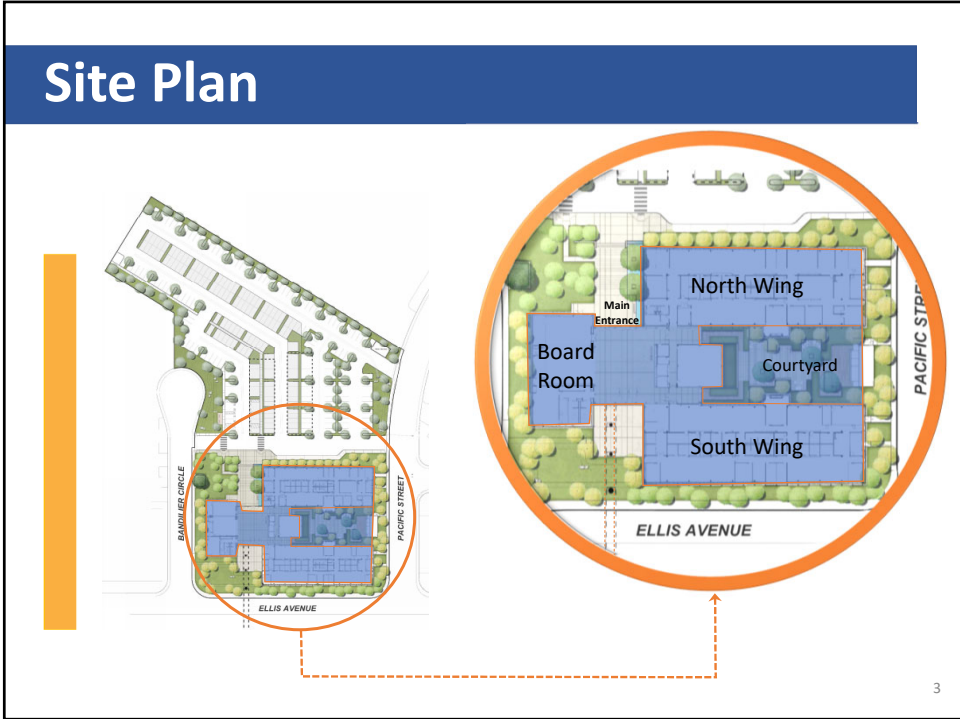


Headquarters
Complex

Administration
Building

2

2



3



4

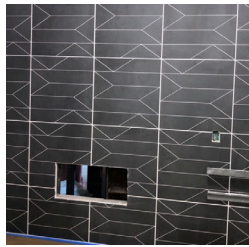
Lobby Entrance



5

5

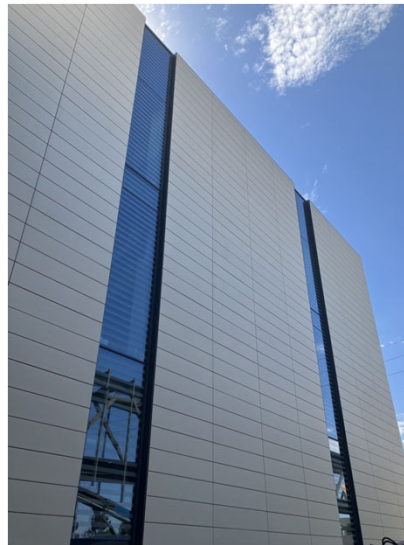
Building Finishes



Restroom Tiling (Accent Wall)



Restroom Tiling



Terracotta Exterior

6

6

Building Interior



Chilled Beam



Workspace Area

7

7

Last Update and Now



8

8

Since Last Update

- Bridge installed across Ellis Avenue
- Audiovisual integrator contract awarded
- Parking lot construction started
- Water and power connected
- Roof work
- HVAC



9

9

Upcoming Activities

- Parking lot construction completion
- Interior mechanical, electrical, and plumbing
- Audiovisual installation
- Furniture installation



10

10

FFE Negotiation Update

- Maintained desired quality
- Identified minor changes
- ~\$150-200k total expected savings
- Finalizing ancillary furniture selections



11

11

Project Status

Budget

Original Approved Contract	\$102,544,973	
8 Approved Change Orders	\$1,863,146	(\$3,264,103 Remaining)
Total Current Approved Contract	\$104,408,119	
Amount Invoiced	\$83,222,340	(79% of Total)

Schedule

- 86% of contract elapsed
- Final Completion: January 6, 2024

12

12

Project Website www.ocsan.gov/Headquarters

OC SAN
ORANGE COUNTY SANITATION DISTRICT

Home Board Agendas Jobs Report a Problem Sewer Fees Contact Us

SERVICES BUSINESSSES RESIDENTS EDUCATION ABOUT US I WANT TO...

Headquarters Administration Building Project

More Information
Construction Hotline: (714) 278-2965
ConstructionHotline@ocsan.gov
Social Media: #OCSanDistrict

Construction Schedule: Summer 2021 - Late 2023
Construction Budget: \$102.5 million

Live Camera Feed
Register [here](#) for access to view

Notifications
May 2022 - Ellis Avenue right work
Mar 2022 - Start of construction
November 1, 2022 - Notice distributed to affected businesses on Bandelier

Videos
July 22, 2023 - A 100-ft section of the pedestrian skybridge spanning the width of Ellis Avenue was installed. Remaining sections will be installed to complete the bridge to connect the new Headquarters Building to OC San's Plant No. 1. Below are a couple of videos put together by OC San and HDR, the design consultant.

OC San Bridge Installation - July

OC San Bridge Lift 20230722

December 2, 2022 - Mass timber is an engineered wood. It is strong, fire resistant, aesthetically pleasing, reduces carbon footprint, and works alongside other materials as a structural element. Check out video of the last major piece of mass timber being installed.

P1-128A - CLT Topping Off - 12.9

13

Questions

14