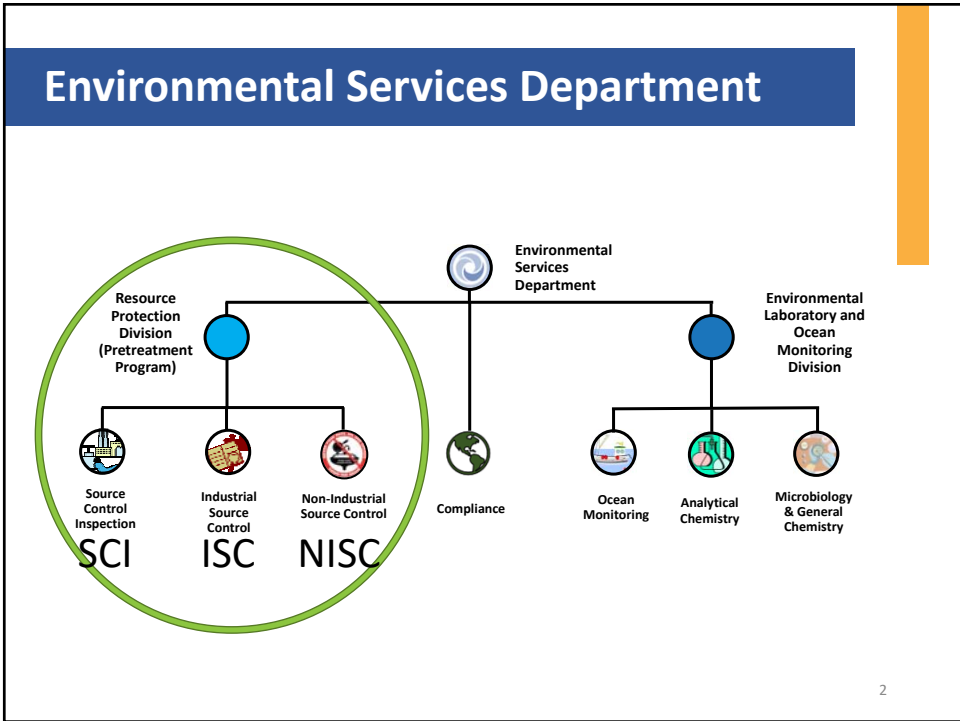


1

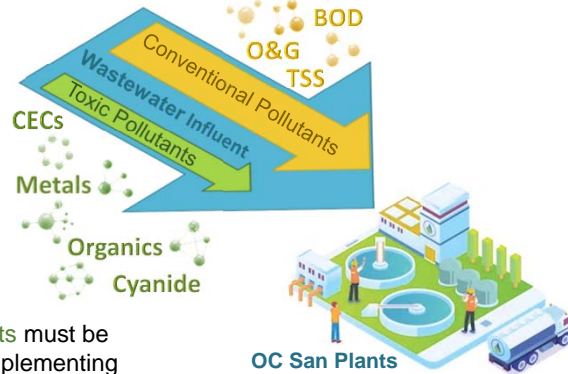


2

Why a Pretreatment Program?

Wastewater contains residential / sanitary conventional pollutants (including the three 'P's) & industrial toxic pollutants

Plants are designed to reduce & reuse conventional pollutants not toxic pollutants



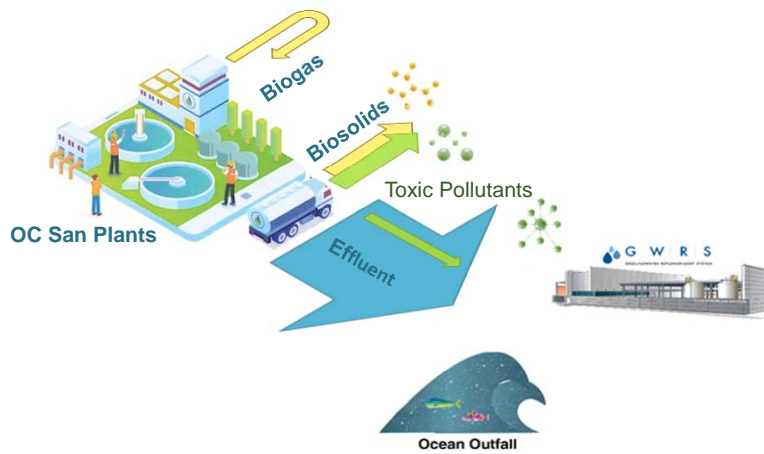
Toxic pollutants must be removed by implementing **pretreatment / source control**

3

3

Why a Pretreatment Program?

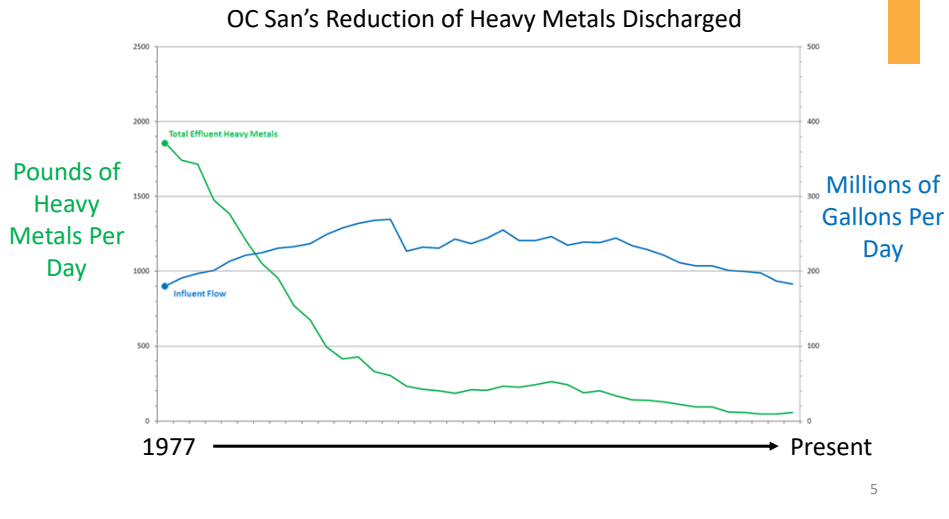
If toxic pollutants are not removed before entering the plants (pre-treatment), then they transport to biosolids, the ocean, & GWRS



4

4

Effectiveness of Source Control



5

The Six Components of Resource Protection (Pretreatment & Source Control)



6

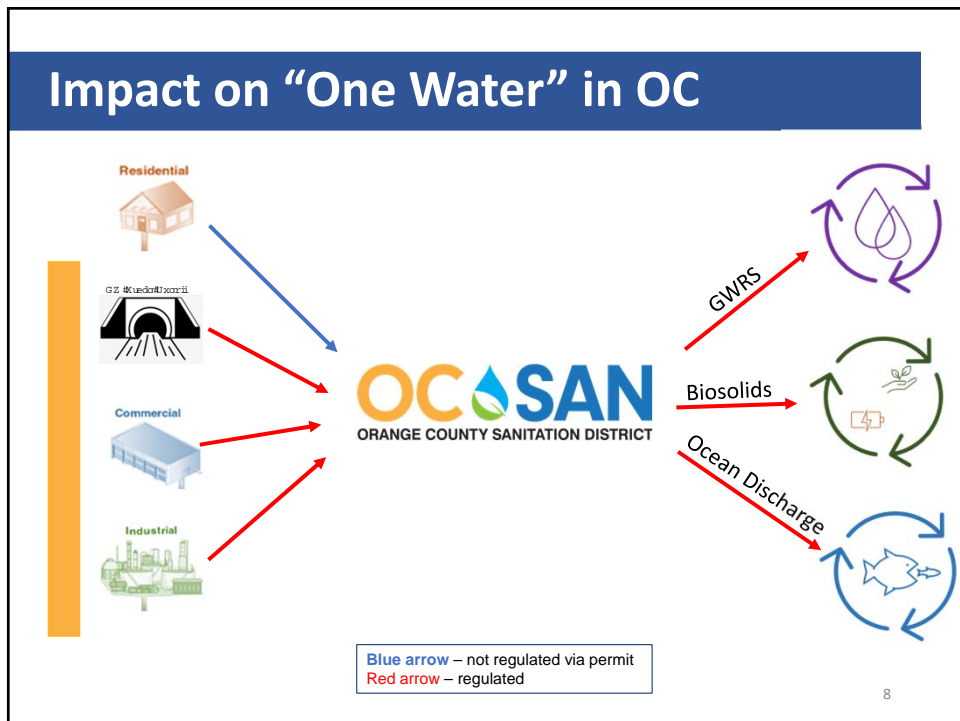
6

The Six Components of

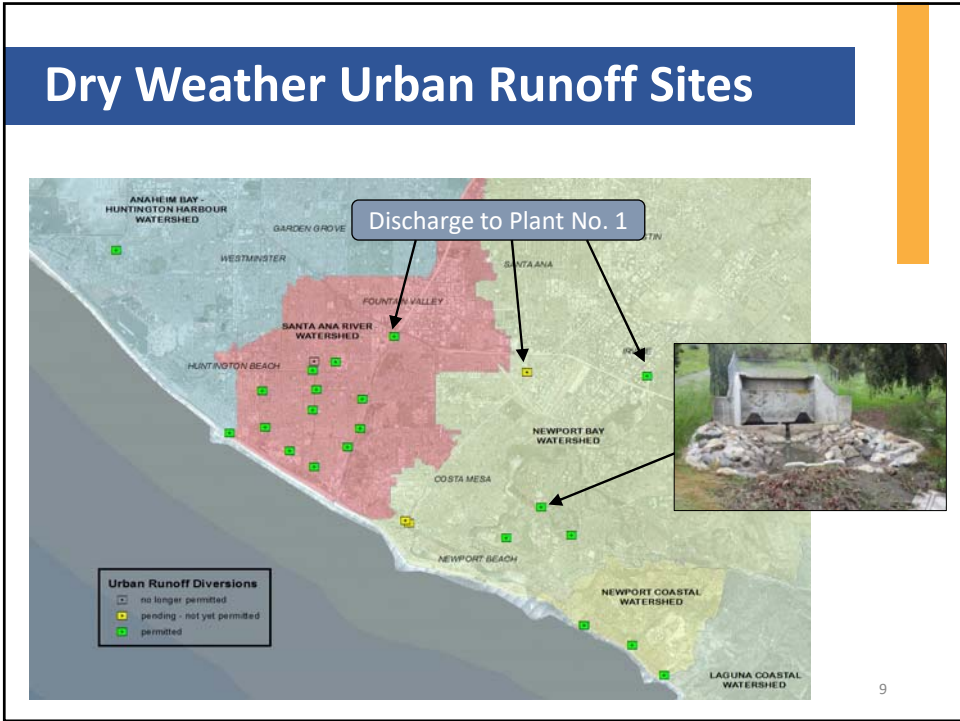
of enforcement responses

7

7



8





9



10

Questions



11