

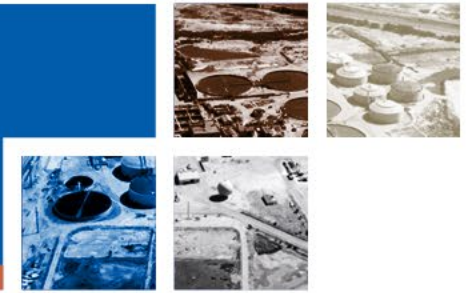
# Capital Improvement Program (CIP) FY 2020-21 Budget Update

Kathy Millea, Director of Engineering  
Operations Committee

May 6, 2020



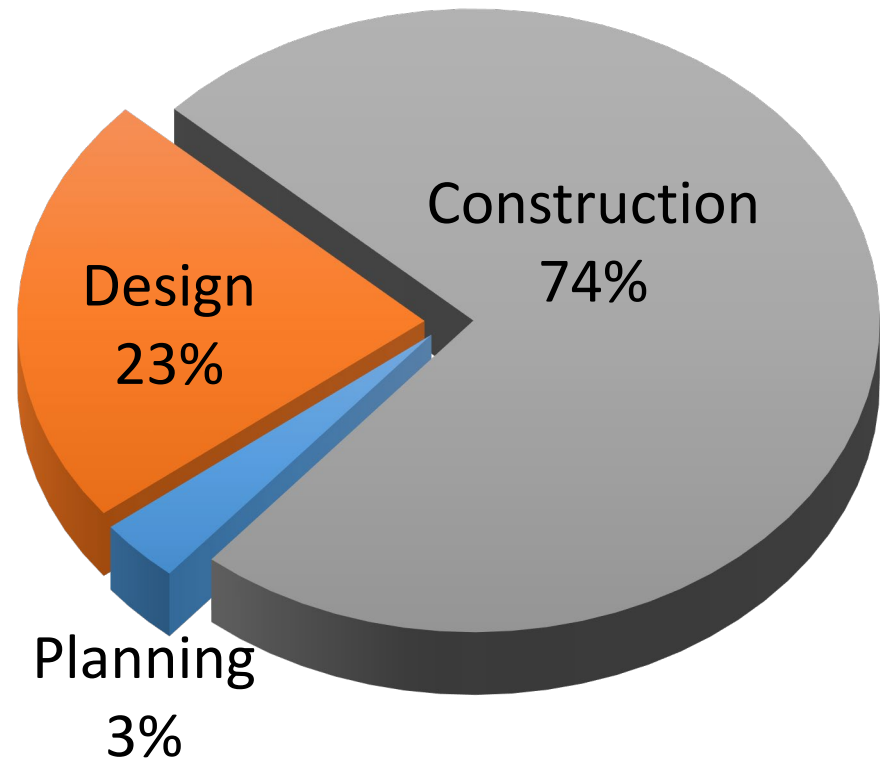
# FY 2019-20 Review



**120M**  
**NET CIP OUTLAY**

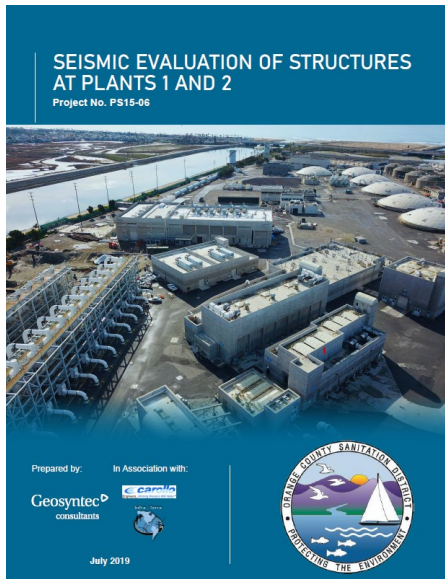


**127**  
**TOTAL PROJECTS**

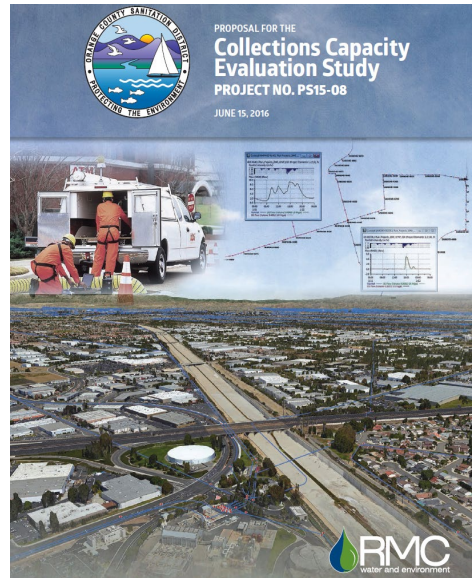




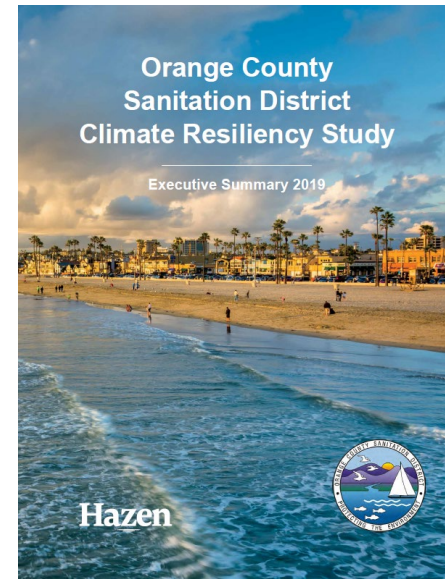
# Completed Planning Studies



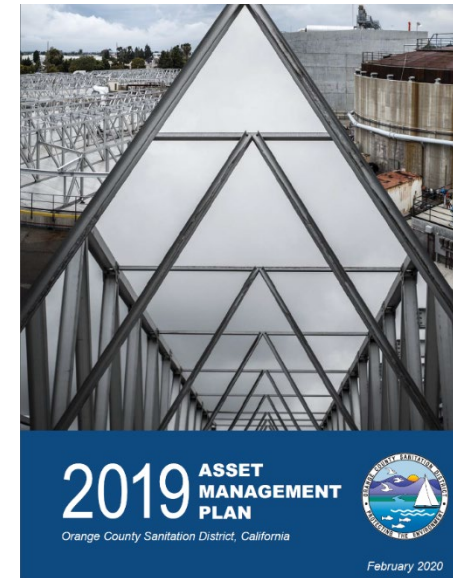
Seismic Evaluation Study



Collections Capacity Evaluation Study



Climate Resiliency Study



Asset Management Plan

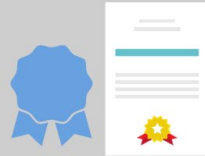
# Design & Construction Accomplishments



**14**

**DESIGNS AWARDED**

Totaling  
\$10.6 million



**NEW CONSTRUCTION  
STARTED**

**6**

\$61 million  
construction costs



**ADVERTISED  
FOR BID**

**16**

\$48 million  
construction costs



**19**

**PROJECTS  
COMPLETED**

\$193 million  
construction costs



**37**

**ACTIVE DESIGNS**

\$810 million  
construction costs



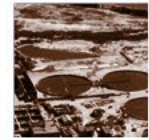
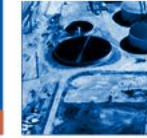
**ACTIVE  
CONSTRUCTION**

**15**

\$275 million  
construction costs

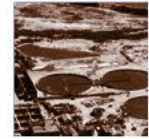
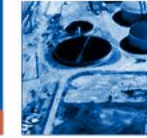


# FY 2019-20 CIP Performance



Performance Measure	Goal	Performance
Net CIP Outlay	85% - 105% (\$130M-\$161M)	78% (\$120M)
Non-Construction Cost (% of Construction Costs)	< 37.5%	34.6%
Cumulative Change Order Rate	< 5%	5.3%

# FY 2020-21 Budget



## Board Presentations:

February – Budget Assumptions

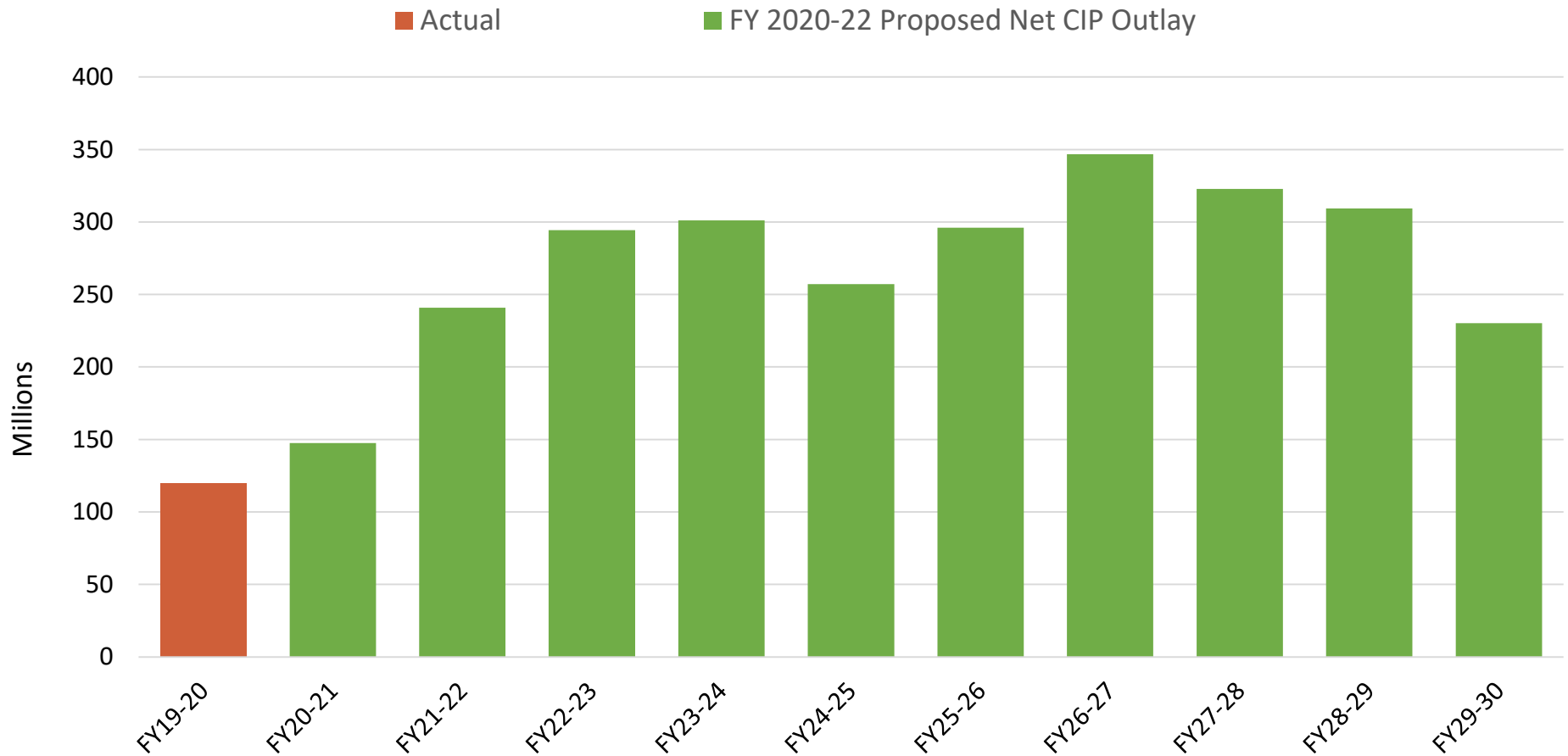
March – Revenue and Debt

April – Operational Expenditures and Insurances

**May – Capital Improvement Program**

June – Board adopts FY 2020-21 Budget

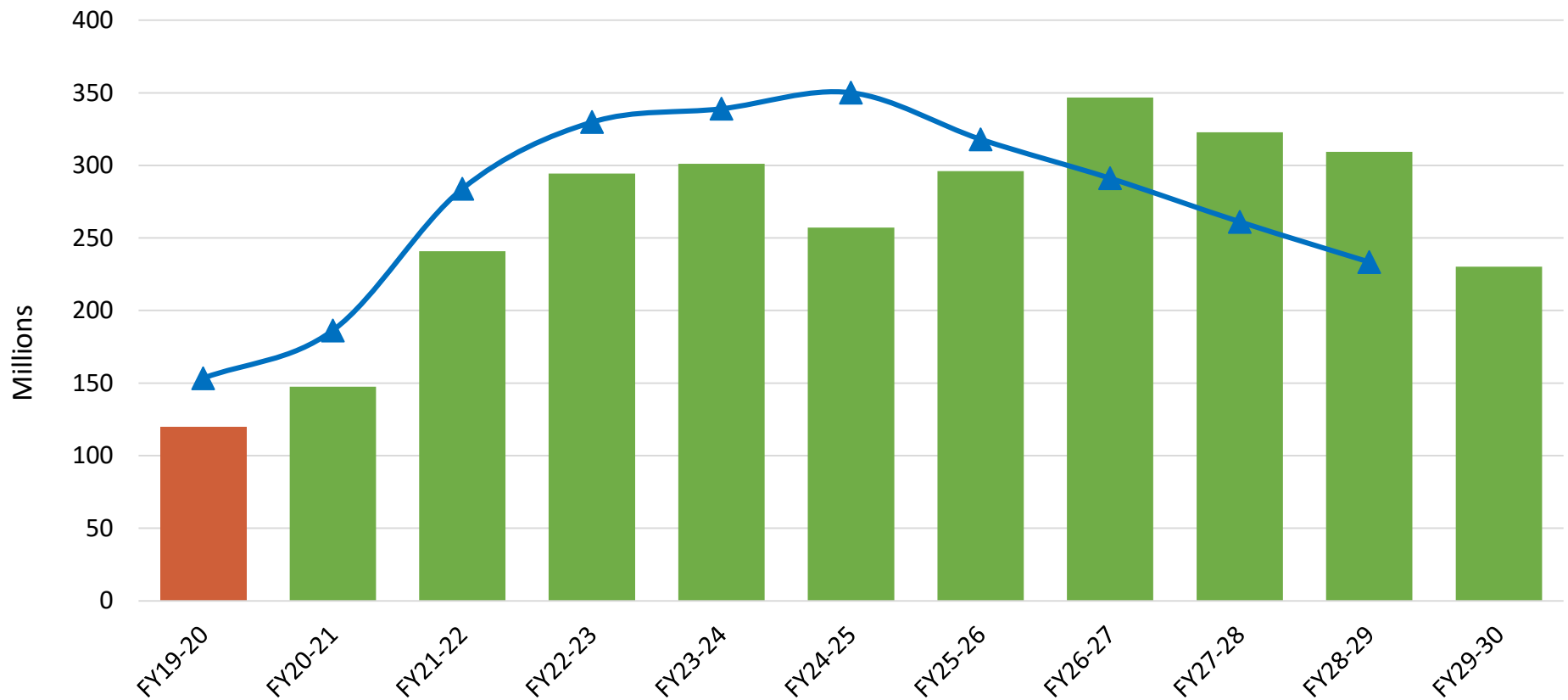
# 10-Year Net CIP Outlay: \$2.7 Billion



# 10-Year Net CIP Outlay: \$2.7 Billion



Actual FY 2020-22 Proposed Net CIP Outlay FY2019-20 Approved Net CIP Outlay

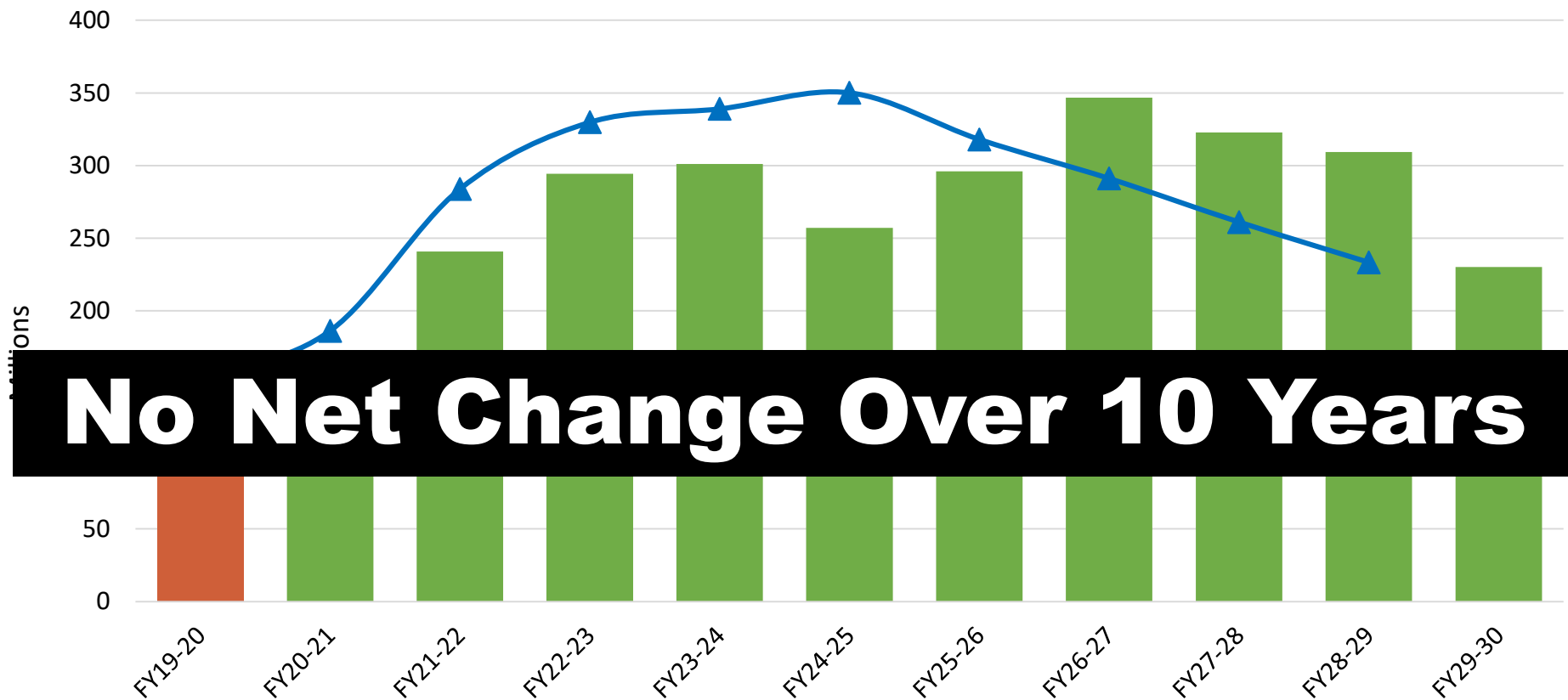




# 10-Year Net CIP Outlay: \$2.7 Billion



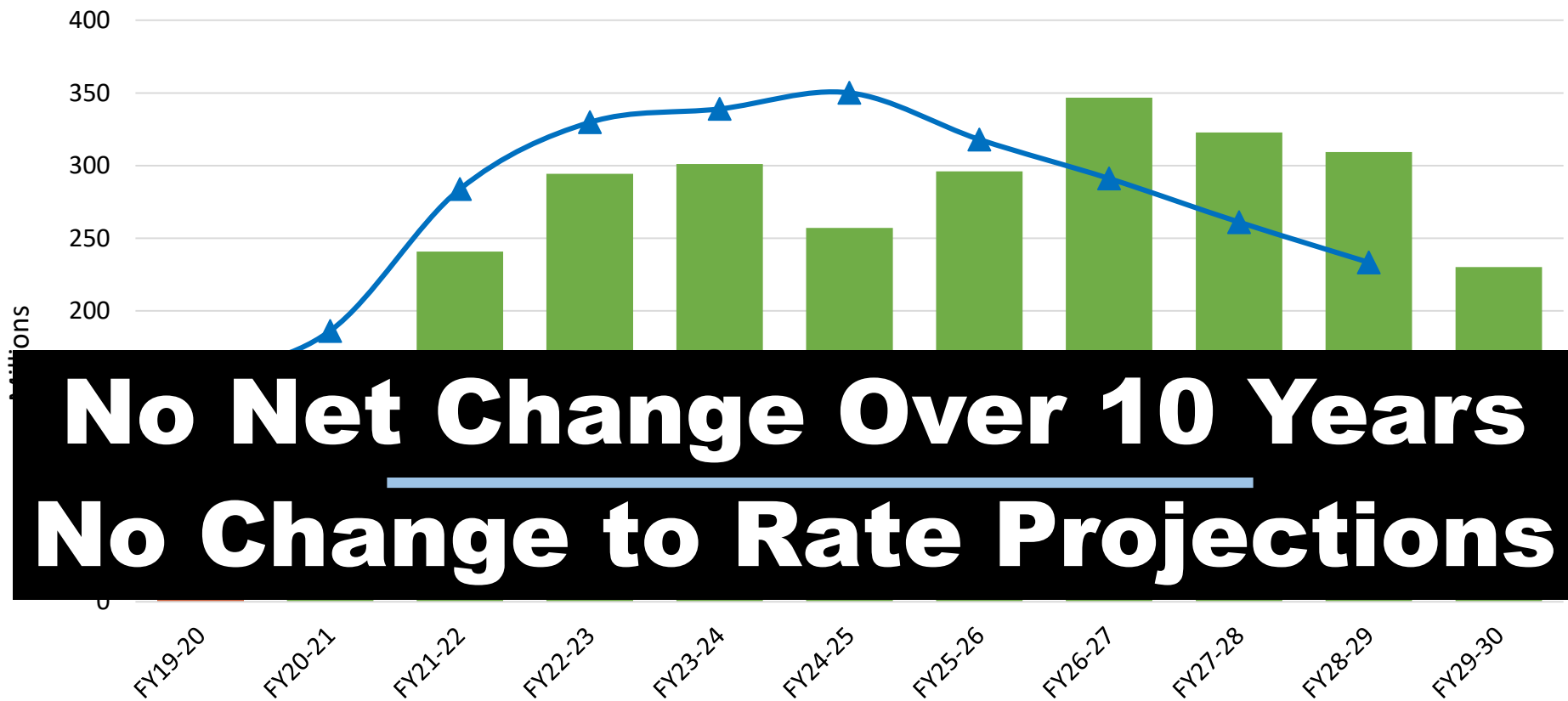
Actual FY 2020-22 Proposed Net CIP Outlay FY2019-20 Approved Net CIP Outlay



# 10-Year Net CIP Outlay: \$2.7 Billion

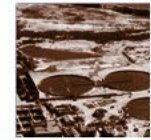
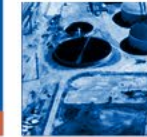


Actual FY 2020-22 Proposed Net CIP Outlay FY2019-20 Approved Net CIP Outlay



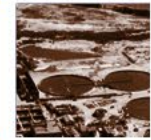
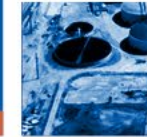
**No Net Change Over 10 Years**  
**No Change to Rate Projections**

# Total CIP Budget Authority



Total CIP Budget Authority	Budget
FY 19-20 Approved Total CIP Budget Authority	\$4.026 billion
FY 20-21 Proposed Total CIP Budget Authority	\$4.179 billion
Net Change	\$153 million (3.6%)

# Total CIP Budget Authority



Net Change	\$153 million	
Midyear CIP Approvals by Board	\$1 million	} \$658M
Proposed New Projects	\$392 million	
Proposed Project Budget Increases	\$265 million	
Proposed Projects Budget Decreases	-\$247 million	} -\$505M
Proposed Project Cancellations/Closures	-\$257 million	
Capital Equipment Purchases	-\$0.7 million	

# Total CIP Budget Authority



Net Change	\$153 million	
Midyear CIP Approvals by Board	\$1 million	} \$658M
Proposed New Projects	\$392 million	
Proposed Project Budget Increases	\$265 million	
Proposed Projects Budget Decreases	-\$247 million	} -\$505M
Proposed Project Cancellations/Closures	-\$257 million	
Capital Equipment Purchases	-\$0.7 million	



# New Projects



Project No.	Project Name	Proposed Budget	Start Date
J-135	Central Generation Engine Overhauls at Plant No. 1 and 2	\$26 M	2020
1-23	Santa Ana Trunk Sewer Rehabilitation (Santa Ana)	\$54 M	2021
J-136	Power Building Structural Seismic Improvements at Plant Nos. 1 and 2	\$7 M	2021
P1-137	Supports Buildings Seismic Improvements at Plant No. 1	\$24 M	2021
P1-138	Network, Telecom and Server Relocation at Plant No. 1	\$3 M	2021
P2-135	Sodium Bisulfite Station Rehabilitation at Plant No. 2	\$4 M	2021
P2-137	Digesters Rehabilitation at Plant No. 2	\$41 M	2021
P2-138	Operations and Maintenance Complex at Plant No. 2	\$95 M	2021
1-24	Greenville Trunk Improvements (Santa Ana)	\$49 M	2022
7-69	North Trunk Improvements (Tustin)	\$9 M	2022
P2-136	Activated Sludge Aeration Basin at Plant No. 2	\$65 M	2022
P1-136	12.47 kV Switchgear Replacement at Central Generation at Plant No. 1	\$15 M	2025

# New Projects



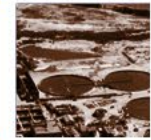
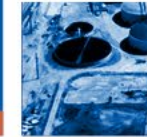
Project No.	Project Name	Proposed Budget	Start Date
J-135	Central Generation Engine Overhauls at Plant No. 1 and 2	\$26 M	2020
1-23	Santa Ana Trunk Sewer Rehabilitation (Santa Ana)	\$54 M	2021
J-136	Power Building Structural Seismic Improvements at Plant Nos. 1 and 2	Seismic	
P1-137	Supports Buildings Seismic Improvements at Plant No. 1	Seismic	
P1-138	Network, Telecom and Server Relocation at Plant No. 1	\$3 M	2021
P2-135	Sodium Bisulfite Station Rehabilitation at Plant No. 2	\$4 M	2021
P2-137	Digesters Rehabilitation at Plant No. 2	\$41 M	2021
P2-138	Operations and Maintenance Complex at Plant No. 2	Seismic	
1-24	Greenville Trunk Improvements (Santa Ana)	\$49 M	2022
7-69	North Trunk Improvements (Tustin)	\$9 M	2022
P2-136	Activated Sludge Aeration Basin at Plant No. 2	\$65 M	2022
P1-136	12.47 kV Switchgear Replacement at Central Generation at Plant No. 1	\$15 M	2025

# New Projects



Project No.	Project Name	Proposed Budget	Start Date
J-135	Central Generation Engine Overhauls at Plant No. 1 and 2	\$26 M	2020
1-23	Santa Ana Trunk Sewer Rehabilitation (Santa Ana)	\$54 M	2021
J-136	Power Building Structural Seismic Improvements at Plant Nos. 1 and 2	Seismic	
P1-137	Supports Buildings Seismic Improvements at Plant No. 1	Seismic	
P1-138	Network, Telecom and Server Relocation at Plant No. 1	\$3 M	2021
P2-135	Sodium Bisulfite Station Rehabilitation at Plant No. 2	\$4 M	2021
P2-137	Digesters Rehabilitation at Plant No. 2	Replaces P2-91-1	
P2-138	Operations and Maintenance Complex at Plant No. 2	Seismic	
1-24	Greenville Trunk Improvements (Santa Ana)	\$49 M	2022
7-69	North Trunk Improvements (Tustin)	\$9 M	2022
P2-136	Activated Sludge Aeration Basin at Plant No. 2	\$65 M	2022
P1-136	12.47 kV Switchgear Replacement at Central Generation at Plant No. 1	\$15 M	2025

# Top Budget Increases



Project No.	Project Name	Proposed Budget	Phase
P2-133	B/C-Side Primary Sedimentation Basins Rehabilitation at Plant No. 2	\$280 M	Future
J-133	Laboratory Rehabilitation at Plant No. 1	\$44 M	Future
3-68	Los Alamitos Sub-Trunk Extension (Seal Beach, unincorporated)	\$84 M	Future
3-60	Beach Relief Trunk/Knott Interceptor/Miller Holder Trunk Rehabilitation (Buena Park)	\$35 M	Future
M-FE	Small Construction Projects Program	\$65 M	Future
P1-126	Primary Sedimentation Basins No. 3-5 Replacement at Plant No. 1	\$118 M	Future
P2-126	Warehouse, Electrical Substation & 12kV Service Center Replacement at Plant 2	\$65 M	Project Development
P2-128	TPAD Digester Facility at Plant 2	\$455 M	Pre-Design
5-67	Bay Bridge Pump Station Replacement (Newport Beach)	\$74 M	Pre-Design
J-124	Digester Gas Facilities Rehabilitation	\$173 M	Design

# Top Budget Increases



Project No.	Project Name	Proposed Budget	Phase
P2-133	B/C-Side Primary Sedimentation Basins Rehabilitation at Plant No. 2	\$280 M	Future
J-133	Laboratory Rehabilitation at Plant No. 1	Seismic	
3-68	Los Alamitos Sub-Trunk Extension (Seal Beach, unincorporated)	\$84 M	Future
3-60	Beach Relief Trunk/Knott Interceptor/Miller Holder Trunk Rehabilitation (Buena Park)	\$35 M	Future
M-FE	Small Construction Projects Program	\$65 M	Future
P1-126	Primary Sedimentation Basins No. 3-5 Replacement at Plant No. 1	\$118 M	Future
P2-126	Warehouse, Electrical Substation & 12kV Service Center Replacement at Plant 2	Merged Project	
P2-128	TPAD Digester Facility at Plant 2	Seismic	
5-67	Bay Bridge Pump Station Replacement (Newport Beach)	\$74 M	Pre-Design
J-124	Digester Gas Facilities Rehabilitation	\$173 M	Design



# Top Budget Decreases



Project No.	Project Name	Proposed Budget	Phase
P1-127	Central Generation Rehabilitation at Plant No. 1	\$68 M	Future
J-120	Process Control Systems Upgrades	\$33 M	Future
P2-119	Central Generation Rehabilitation at Plant No. 2	\$108 M	Future
5-66	Crystal Cove Pump Station Rehabilitation (Newport Beach)	\$13 M	Future
11-33	Edinger Pump Station Replacement (Huntington Beach)	\$10 M	Future
3-64	Rehabilitation of Western Regional Sewers (Anaheim, Buena Park, Cypress, La Palma, Los Alamitos, Seal Beach, unincorporated)	\$70 M	Pre-Design
P2-98	Primary Treatment Rehabilitation at Plant No. 2	\$237 M	Design
P2-122	Headworks Modifications at Plant No. 2 for GWRS Final Expansion	\$32 M	Construction
3-62	Westminster Blvd Force Main Replacement (Seal Beach, Westminster)	\$44 M	Construction
P2-123	Return Activated Sludge Piping Replacement at Plant 2	\$11 M	Construction

# Project Cancellations/ Closures



Project No.	Project Name	Approved Budget	Status
P1-100	Digester Rehabilitation at Plant 1	\$66 M	Closed
5-60	Newport Force Main Rehabilitation (Newport Beach)	\$60 M	Closed
7-37	Gisler - Red Hill Trunk Improvements - Reach B (Tustin)	\$25 M	Closed
J-131	18350 Mt. Langley St. Building Purchase and Improvement	\$10 M	Closed
P2-107	SCADA System and Network Upgrades	\$5 M	Closed
P2-118	Activated Sludge Aeration Basin Deck Repair at Plant No. 2	\$2 M	Closed
SP-152	Climate Resiliency Study	\$1 M	Closed
P2-134	Substation Replacement at Plant No. 2	\$40 M	Cancelled
7-67	Main Street Pump Replacement and Force Main Rehabilitation (Irvine, Costa Mesa)	\$17M	Cancelled
P2-91-1	Plant No. 2 Digester Facilities Rehabilitation	\$16 M	Cancelled
1-101	Raitt and Bristol Street Sewer Extension (Santa Ana)	\$7 M	Cancelled
J-121	UPS System Upgrades	\$5 M	Cancelled
P2-125	Perimeter Screening at Plant No. 2	\$3 M	Cancelled

# Project Cancellations/ Closures



Project No.	Project Name	Approved Budget	Status
P1-100	Digester Rehabilitation at Plant 1	\$66 M	Closed
5-60	Newport Force Main Rehabilitation (Newport Beach)	\$60 M	Closed
7-37	Gisler - Red Hill Trunk Improvements - Reach B (Tustin)	\$25 M	Closed
J-131	18350 Mt. Langley St. Building Purchase and Improvement	\$10 M	Closed
P2-107	SCADA System and Network Upgrades	\$5 M	Closed
P2-118	Activated Sludge Aeration Basin Deck Repair at Plant No. 2	\$2 M	Closed
SP-152	Climate Resiliency Study	\$1 M	Closed
P2-134	Substation Replacement at Plant No. 2	Merged Project	
7-67	Main Street Pump Replacement and Force Main Rehabilitation (Irvine, Costa Mesa)	Merged Project	
P2-91-1	Plant No. 2 Digester Facilities Rehabilitation	Replaced with P2-137	
1-101	Raitt and Bristol Street Sewer Extension (Santa Ana)	\$7 M	Cancelled
J-121	UPS System Upgrades	\$5 M	Cancelled
P2-125	Perimeter Screening at Plant No. 2	\$3 M	Cancelled

# OCSD is “Shovel Ready”



**37**  
**PROJECTS**



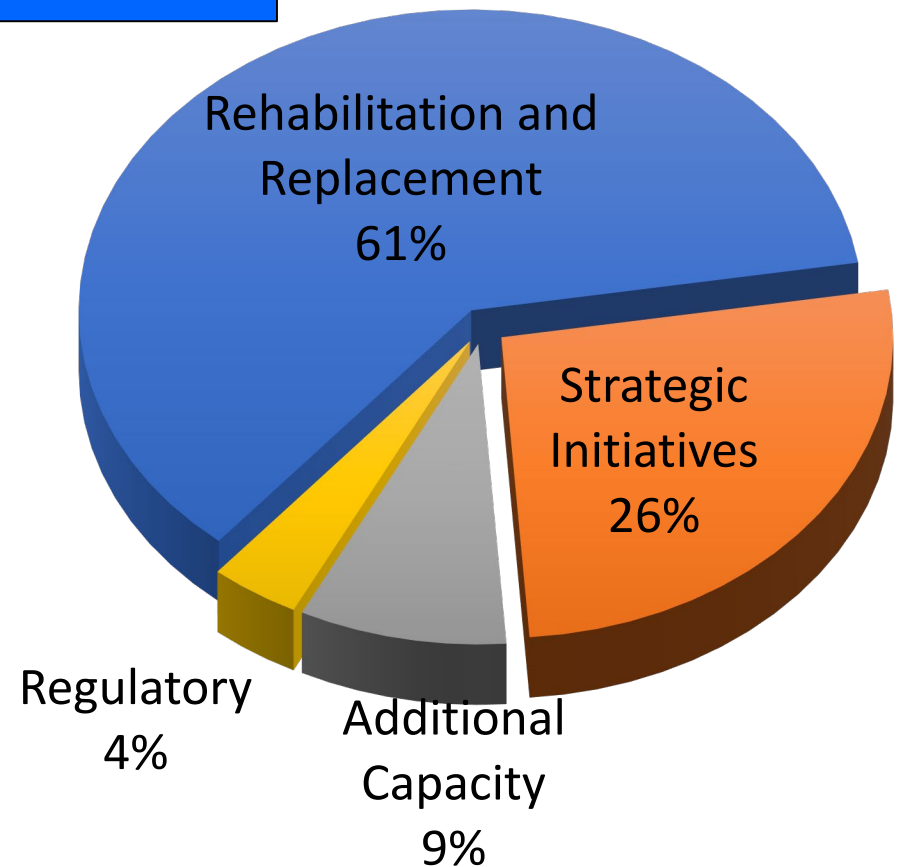
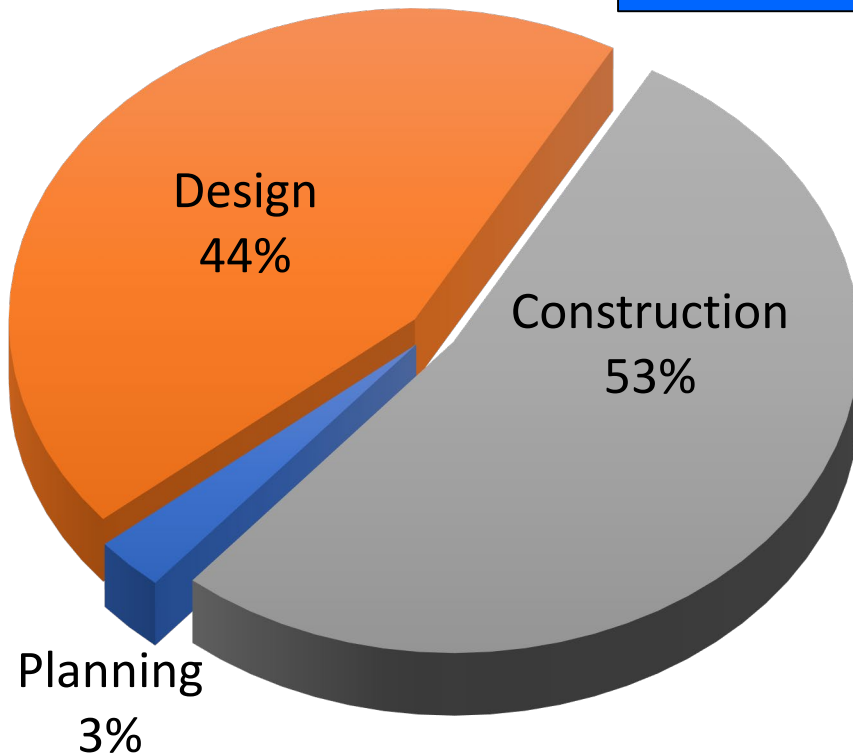
**\$ 500M**

Project Name	Construction Cost
t 1	\$ 293,268,000
ment at Plant 2	\$ 139,400,000
auls at Plant No. 1 and 2	\$ 20,000,000
ilitation	\$ 6,752,000
ilitation	\$ 5,453,000
ity Improvements at Plant No.1	\$ 5,105,000
Plant No. 1	\$ 4,500,000
at Plant No. 2	\$ 4,100,000
ility	\$ 2,691,000
eration	\$ 2,500,000
or Repairs	\$ 2,500,000
Connectors	\$ 1,200,000
t State Route 55	\$ 880,000
t in Kinnison, Lindstrom, and Scott Tunnels at Plant No	\$ 750,000
Pump Station Roofing Replacement	\$ 662,000
ir	\$ 661,000
ation Elevator Rehabilitation at Plant No. 2	\$ 650,000
nt at Plant Nos. 1 and 2	\$
placement	\$
n Valve Replacement	\$
ing Replacement	\$

# Projected FY 2020-21 Net CIP Outlays by Project Phase

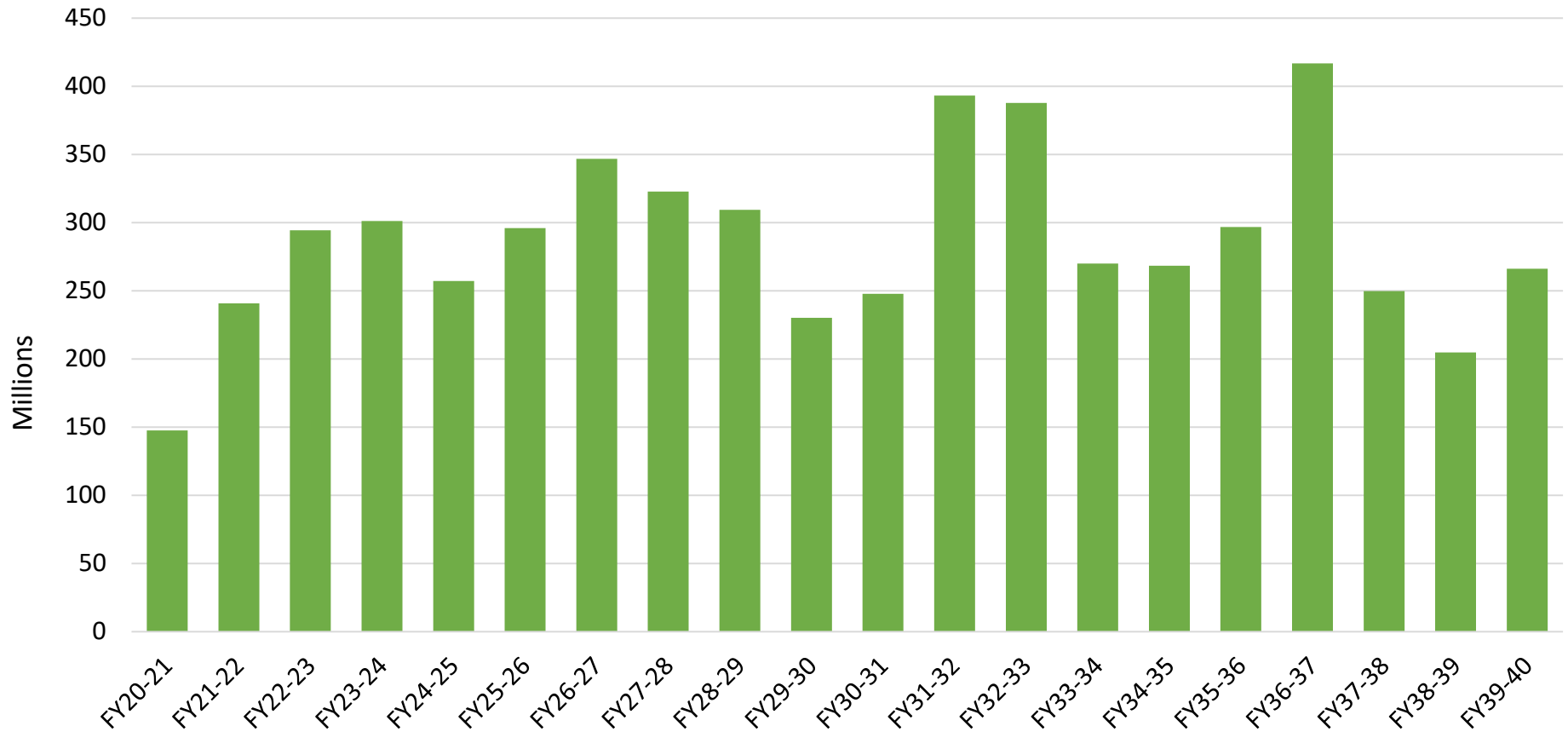
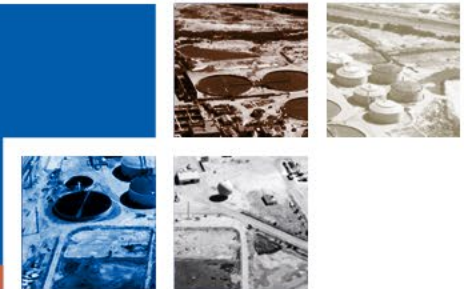


**Total Net CIP Outlay  
\$147.6 million**





# 20-Year Net CIP Outlay: \$5.7 Billion



# Questions?

